

Church & Village News

Baconsthorpe • Barningham Winter • Edgefield • Hempstead • Itteringham • Little Barningham
Matlaske • Plumstead • Saxthorpe with Corpusty • Wickmere with Wolterton

December 2015 & January 2016



All Saints Church, Hempstead: A Christmas Past
by Clive Rammell

Nature Notes

Something of a beard boom going on these days must prove tricky for pogonophobes, unfortunate individuals with an intense fear of facial hair! From designer stubble to full hillbilly ticklers, some 55% of the world's male population seem to have gone beard mad, possibly trying to avoid wasting the 4½ months that it is said the average man spends shaving throughout his lifetime!



Whilst the natural world around us hunkers down for the winter months, it too gets in on the whole beardy thing, sporting varieties of fluffy stuff - untidy remnants of Rosebay Willowherb seeds tremble on roadside verges, shattered Bulrush heads sway in our village ponds whilst Thistledown lies trapped in the field boundary briars. Wild Clematis, too, now makes itself conspicuous as its seed structures, white tufted balls of long silky hairs known as Old Man's Beard, drape loosely over the hedges and trees.

A member of the buttercup family, Clematis vitalba is our only native clematis. Like the familiar imported garden varieties, its curling leaf stalks wrap around any nearby structure for support, enabling it to haul itself upwards as much as 40 feet each year. In its native UK, such rapid growth is kept in check by other species, but in New Zealand where it was introduced as a specimen plant in the 1930s, it has wreaked havoc with the natural ecosystem, forming dense matted carpets of twining vines and leaves, strangling indigenous plants, and, by blocking out all light, preventing their regeneration.

The bark from the plant's thick woody stems has been stripped and plaited into rope since Stone Age times, used to craft various items from beehives to gate fastenings, whilst unpalatable toxins made it a helpful mouse-proof tie for harvested corn sheaves. Once dried, its hollow stems would be smoked, providing a poor man's tobacco, whilst enterprising eighteenth century beggars deliberately applied the acrid sap to their skin, creating sores that would, hopefully, elicit sympathy and donations from passers-by!

With unremarkable and barely scented small white flowers in the summer months, wild clematis easily blends, often unseen, with other foliage. Come this time of year however, its unusual clusters of white 'beards', festooning the winter-bare branches capture our attention.

White, old man's beards grabbing centre stage in December? Where have I come across that before?

Oh, now I remember..... Ho Ho Ho - Happy Christmas everyone!



Sue Appleby

What's On

DECEMBER

Thur 3	3.30pm	Corpusty Families Together - Christmas Party	Village Hall
Fri 4	10.30am	Hempstead Coffee & Gossip	Village Hall
Fri 4	7.30pm	Edgefield Film Night - <i>The Missing Picture</i>	Village Hall
Sat 5	7.00pm	Hempstead Christmas Get-together & Follies	Village Hall
Sat 5	tbc	Edgefield Christmas Festive Evening	Village Hall
Mon 7	7.30pm	Baconsthorpe Parish Council Meeting	Village Hall
Tue 8	11.00am	Corpusty North Norfolk Knitters	Dukes Head
Wed 9	12.00noon	Corpusty LinC Christmas Lunch	Dukes Head
Wed 9	2.00pm	Barnigham Winter PCC Meeting	
Wed 9	7.30pm	Baconsthorpe Christmas Bingo	Village Hall
Fri 11	10.00am	Saxthorpe Christmas Tree Festival	St Andrew's Church
Fri 11	6.30pm	Saxthorpe Christmas Tree Festival Preview	St Andrew's Church
Fri 11	7.30pm	Baconsthorpe Christmas Social Evening	Village Hall
Sat 12	10.00am	Saxthorpe Christmas Tree Festival	St Andrew's Church
Sat 12	11.00am	Edgefield Fuel Fund Distribution	Village Hall
Sat 12	4.00pm	Baconsthorpe Village Christmas Party	Village Hall
Sat 12	6.00pm	Baconsthorpe Pop-Up Bar	Village Hall
Sat 12	6.30pm	Wickmere Christmas Lights Switch-On	Village Hall
Sun 13	10.00am	Saxthorpe Christmas Tree Festival	St Andrew's Church
Sun 13	11.00am	Saxthorpe Toys & Tins Service	St Andrew's Church
Sun 13	12.30am	Little Barningham Community Christmas Lunch	Village Hall
Mon 14	6.30pm	Corpusty Primary School Nativity	St Andrew's Church
Fri 18	6.30pm	Plumstead Mulled Wine & Mince Pies	St Michael's Church
Tue 22	6.00pm	Plumstead Village Carol Singing	St Michael's Church

JANUARY

Mon 4	7.00pm	Hempstead Parish Council Meeting	Village Hall
Thur 14	7.30pm	Baconsthorpe Village Hall Committee	Village Hall
Thur 21	10.30am	Matlaske PCC	Barningham Hall
Fri 29	6.00pm	Baconsthorpe Pop-up Pub	Village Hall

Please see page 25 for the Regular Events which have needed to move in this edition

Norfolk Sewing Machine Services

All makes repaired by
highly skilled mechanics
Over 30 years experience
Fully guaranteed
Free estimates
Discount to senior citizens



01263 584113

An Invitation to Children

Saturday 12th December at 2.30 pm
Oak Tree Cottage, Cherry Tree Rd, Plumstead

Come and help make the Christingles for the service the next day and watch a special Christmas DVD

Ring Eleanor 577868
or e-mail faulknereleanor@gmail.com
for further information

Baconsthorpe

Mon 7	7.30pm	Parish Council Meeting - Village Hall
Wed 9	7.30pm	Christmas Prize Bingo - Village Hall
Fri 11	7.30pm	Christmas Social Evening - Village Hall
Sat 12	4.00pm	Village Christmas Party - Village Hall
Sat 12	6.00pm	Pop-Up Bar - Village Hall

200 Club

£25 Rosemary Coombs, £10 Pat Youngs, £5 Pat Abbs, Liz Jordan

Village Hall News

The quiz on 6th November was very well supported - we had 15 teams, and made a profit of £317 for our village hall. Thank you to everyone who supported us, and a big thank you to everyone who gave a raffle prize.

We are very short of 200 club members! Tickets for our monthly draw only costs 50p each, and you can pay annually or monthly, whichever is convenient. Please contact Daphne on 577345 if you would like to join, it all goes towards the upkeep of your village hall.

Do come along to our Christmas Prize Bingo on the 9th December: eyes down at 7.30pm. There are some wonderful prizes and a raffle. Refreshments will be on sale in the interval, including sausage rolls, mince pies, shortcakes and teas/coffee. A very friendly and fun evening, with books on sale at the door.

On Friday 11th December at 7.30pm we will be holding a social evening of Christmas songs, poems and stories as well as carols. You will be greeted with a glass of mulled or fruit punch, and refreshments will be available in the interval. There is also a raffle. Come and join us to get you ready for the Christmas season.

Our next meeting will be on Thursday 14th January at 7.30pm. As always we are looking to get new committee members with fresh ideas, and younger people to help us with the upkeep of your village hall. Please come along!

A merry Christmas and a Happy New Year to you all!

John Cooper

Village Christmas Party & Pop-Up Bar

Part of the proceeds from the very successful Midsummer Fête was put aside for a free Christmas tea for everyone in the village. This will be held on Saturday 12th December at 4.00pm in the Village Hall. Do come along and get the Christmas season off to a flying start. The party will be followed at 6.00pm by the extremely popular Pop-Up Bar.

Parish Council

The Parish Council will be meeting on Monday 7th December at 7.30pm in the village hall. All welcome to attend.

Speedy Recovery

Having previously had her operation cancelled at the very last minute, Margaret Blake has now successfully had the surgery to her spine and is back home recovering. She has even managed to walk around her garden. We send you our good wishes Margaret and trust you will soon be restored to full strength.



Ro Hardingham
577262

The Time Has Come

It is after much deliberation I have decided the time has come to 'quieten my quill' and 'retire my ramblings'. I have been your village correspondent for the past 21 years, and in that time have very much enjoyed sharing the news with you. However, due to problems I now have with my vision, and the fact I will be celebrating a 'significant' birthday in a few months time, I feel it best to hand the baton over to a younger person. How things have changed since those early days! Where once my contributions were hand written, taken to the editor who then typed them out and eventually printed them, now I send them via e-mail. As my computer skills leave a lot to be desired, I thank editors past and present for their encouragement when I have at times struggled. My best wishes to you all.

Ro Hardingham

From the editor: Thank you, Ro, for all you have done for the village and for the wider community. We are all very grateful to you!

Barningham Winter

Wed 9 2.00pm **PCC Meeting**

St Mary's Church

As reported in the September issue, the Barningham Winter PCC have been successful in gaining an HFL grant for essential conservation work to St Mary's Church, Barningham Winter. A huge amount of work had to be undertaken to secure this grant and our most sincere thanks go to Chuffy de Bunsen, Amelia Courtauld and John Perks for all the time they have given to this project.

The next meeting of Barningham Winter PCC will be on the 9th December at 2pm.

May I take this opportunity to wish everyone a 'Very happy Christmas and New Year'.



Sara Buxton
577207



Barningham Winter Harvest Festival Congregation

Corpusty Stores & Post Office

Everything you need,
every time you need it.

Store open 8am-8pm Mon-Sat, 9am-6pm Sun.

Post Office open 9am-12pm Mon-Sat

01263 587202

Norwich Road, Corpusty



Walks Open Daily
Greedy Goose Tearooms
Gardens & Events

Please see website for more information

www.manningtongardens.co.uk

R D Goodge

General building

Flint work

Roofing

Tel: 01263 734014

Mob: 0779 515 8447

www.rdgoodgebuilder.co.uk.

STUART'S TAXI TRAVEL

Sheringham: 01263 824444

Holt: 01263 710088

Freefone: 0800 734 44 44

stuartstaxitravel@btinternet.com

www.stuarts-taxi-and-travel.co.uk

FRIENDLY & RELIABLE
SHORT or LONG DISTANCE

Quality Hand Painted Furniture

Pre-loved, Vintage and Antique Pieces
Brought Back to Life with Passion and Paint

For sale or by commission
Visit our shop at

Nowhere Lane, Nr Sparham, NR9 5PD

www.countrymodern.co.uk
01603 554224 or 07789 502946

Country Modern
Furniture | Accessories | Interiors

YOGA

Alice Martineau

WIVETON
5.30 & 7pm
Tuesdays

ITTERINGHAM
9.30am, 5.30pm & 7pm
Wednesdays

Soften, strengthen and align the body and mind.
Everyone is welcome.

mail@alicemartineau.co.uk
www.alicemartineau.co.uk
07973 278 895



Edgefield

Sat 5 tbc **Christmast Festive Evening** - Village Hall
Sat 12 11.00 **Fuel Fund Distribution** - Village Hall
Sun 13 4.00pm **Carol Service** - St Peter & St Paul's Church



Richard Peaver
587486

Church News

Our Carol Service is at 4 pm on Sunday 13th December. With the Christmas tree and a new crib in place, candles lit and the smell of mulled wine and mince pies warming up, what more could one want to get in the right spirit for our great festival of Christmas? Do come and join us!

As this magazine covers January as well, do remember to have a look at the snowdrops in the old churchyard if they are coming up by then. We have worked so hard there, and many thanks are due to all the splendid helpers who have cleared a jungle.

Stuart Ross and Janet Keymer are again organising the popular Church Quiz Night at the Village Hall on Friday, 12th February. Do put the date in your new diaries, and book nearer the time with Janet 587365, Angela 587292 or Richard 587486.

With very best wishes for a happy, healthy and peaceful Christmas and New Year from Angela, Emma and the PCC.

Angela Turner

Edgefield Fuel Fund

A reminder that the Christmas distribution of £25 fuel money per household will be made on Saturday 12th December between 11.00am and 12.00noon in the Village Hall. No payments will be made outside these hours. Each recipient must have reached the age of 60 years and have been resident in the parish for the past five years. Application must be made in person, or by an authorised representative.

Edgefield Tuesday Club

The Club meets on the first Tuesday of each month in the Village Hall at 2.00pm for a social afternoon. There is a speaker, followed by tea and cakes, a raffle and a bring and buy. New members are always welcome. Initially, come along to see if it appeals to you. From February 2016, the speakers for the following five months will be covering topics such as the North Norfolk Railway, Norfolk Wildlife Trust, Police Reminiscences, Wonders of Woollies, Air Racing and a garden meeting in July.

Vera Stolworthy

Village Hall News

The committee of Edgefield Village Hall would like to wish all our supporters a Happy Christmas and a prosperous New Year. On the subject of 2016, please look out for our forthcoming events and regular monthly film nights. Further details will be printed in the next edition and the Village Hall notice board will advertise the same.

Jim Frost



SILVER SURFERS Computer Services

PC Problems? No problem!

*A reliable, friendly, efficient service
in the comfort of your own home*

- Installation • Troubleshooting • Tuition •
- Free Advice • Upgrades •

Andrew Benn 01263 761133
www.silversurferandy.com

M. A. SULLIVAN

FENCING SERVICES
Free Quotations

01263 585016 or 07972 707053

Breke House, 3 Norwich Road, Corpusty

Jam and Chutney Sale on 20th November

A big thank you for all who made preserves and helped to sell it in Holt High Street on November 20th. £303.80 was raised, both from sales and from generous donations, in aid of the Norwich Diocese Refugee Crisis Appeal.

Hempstead

Fri 4 10.30am **Coffee & Gossip** - Village Hall
Sat 5 7.00pm **Christmas Get-together & Follies** - Village Hall

200 Club

£25 K Hurrell, £10 M Williams, £5 A McFaydon, L Matthews, G Harris

Norfolk Venda Education Trust

The following card has been received from the Norfolk Venda Education Trust:
"To the people of Hempstead village and their friends, yet again we see another wonderful example of huge generosity of the members of Hempstead church. Your efforts have already made a difference to the lives of the Venda children. This time the money raised will go directly to Mphigalae school where many of the pupils have no desks and have to do all their work on the floor. Please convey our sincere gratitude to all those who have shown generosity. Please assure everyone that their money will be very carefully spent. Thank you on behalf of the Venda children."

Ceri and Michele Holmes

PS The lunch was delicious as usual!

Welcome to Matthew and Siobhan and their child who have come to live at Church cottage. We hope you will all be happy here.

Bird watching news is that back in October there was a sighting of a rough-legged buzzard and a brambling, and in November there was a sighting of a firecrest, which is pretty amazing!

The Great Hempstead Christmas Get-together & Follies

The fun starts at 7pm on Saturday December 5th. This is a free evening for all Hempstead residents and friends at the Village Hall, and includes refreshments and entertainment. At great expense the Follies have assembled a dazzling list of local talent for this year's show, with a programme of music singing and drama.

The Village Hall committee would like to wish you all a very happy Christmas and New Year and look forward to seeing you all on 5th December.

MRT

Norfolk Churches Cycle Walk/Car Ride

The church wardens would like to thank all those who took part in the Norfolk Churches Cycle/Walk/Car ride, including church sitters as reported in the last newsletter. We are amazed by the total raised and the church will be so grateful to receive our share of this in due course. In her usual modest way, Yvette did not add her name to the list of cyclists, but was always in front both getting sponsors and on the ride itself. Thanks are due to Rose Carver, the Deanery organiser, and of course to Yvette once more, who as our parish organiser rounds up and gets us motivated.

Su Summers and Ann Udale

Calling all Hempstead children! We need your help at our crib service on Christmas Eve at 3pm!



Sharon Hannah
711769

Itteringham

A week of the fallen: an aged tree crashed to earth on the writers' loke midst mighty gales, but the fallen of Paris were the truly dreadful loss. The contrast could not be greater. The once proud oak, old and withered; the Parisians mostly young, vibrant and beautiful. Christine Cozic, who came here from Bordeaux, said "Hate and vengeance should not be a driver to the future".



Eric Goodman
587278



IT'S A BOY! He was not 'droned in' by Amazon (babies are not yet an option there) but he was delivered in the normal way to Robert and Sophia Fowell on 22nd July, and baptised by Marion on Sunday 22nd November. His names are Bertie, Austin, James and he is brother to Katherine, Eleanor, Sophie and Ophelia. He'll be well pampered. Six cheers for the family and one for Bertie and one extra for Marion. Have a lovely life, my man!

Welcome to Jonathan and Emily who have moved in to the cottage by the shop. More on this in the next edition.

Betty Covells' blackberry pie was devotedly devoured. Much approval of her 'perfectional' pudding was voiced. More is already ordered for next year. The Harvest Supper, shared with Barningham, was a great success, and with music by our legendary cartoonist from Oulton Street, Tony Hall, it was good fun. Mention must be made of the extraordinary effort by all. The food

was donated (Ellie Betts's cheese was sweetly savoured), raffle prizes were generous to a fault (The Saracen's Head is always particularly generous) and in spite of their announcement of retirement, the Skinner family were again still pretty close to the driving seat! A Niagara of thanks to everyone for what became a very, very bright evening. £1000 was raised. More cheers!

ITTERINGHAM VILLAGE SHOP

Established 1637

General Store, Post Office, Café and Off Licence
Run by the Itteringham Community Association
Groceries, Deli Counter, Whole Foods, Wines, Beers,
Delicious Cakes, Hand Made Pies, Pet Foods,
Local Produce, Ices, Sweets, Books, Maps, Plants

Shop open 9.00-5.00 every day except Sunday 9.00-12.00.

Post Office open Monday & Thursday am

Home Deliveries Telephone 01263 587325



The Common
Itteringham
Norwich
Norfolk NR11 7AR

Tel: 01263 587258
Email: info@thewalpolearms.co.uk
Website: www.thewalpolearms.co.uk

A Traditional Country pub serving
modern British cuisine, using the
highest quality locally sourced
seasonal produce, some from our
own farm.

Chargrilled meat and fish a speciality

Opening Hours
Monday to Friday
12:00pm - 3:00pm & 6:00pm - 11:00pm
Saturday 12:00pm - 11:00pm
Sunday 12:00pm - 5:00pm

HAY FOR SALE



577459

PHIL BORLEY

Garden Construction :: Ponds & Patios
Turf :: General Garden Maintenance
Paving :: Fencing & Car Ports & Rotavating

For the Complete
Garden Service



Tel: 01263 587262



- Servicing
- General Repairs
- MOT Tests
- Tyre Fitting Service
- Welding
- Recovery
- Car Sales

Norwich Road, Edgefield NR24 2RL

Contact Ross 01263 587970

Need your dog walked?

Someone to look after your cat?
A pet-sitter, house-sitter, plant-waterer?

- ~ Regular walking while you're at work
- ~ Care while you're on holiday

Reliable, trustworthy and caring
CRB checked and insured

01263 735727

Spotandspike@hotmail.com



07887906620

SAND, SHINGLE & AGGREGATES
FIREWOOD & BARK MULCH
SUPPLIED & DELIVERED

DRIVEWAYS, PATIOS & DRAINS LAYED
GROUNDWORKS & LANDSCAPING
CONCRETING & GARDEN CLEARANCE

CEMENT MIXER, WACKER PLATE,
VIBRATING ROLLER HIRE,
MINI DIGGER & JCB HIRE

LIGHT HAULAGE
FREE QUOTATIONS ON REQUEST

Ivan Fisher

FUNERAL HOME

We are the only family owned
funeral directors in Aylsham
and offer the highest
standards of personal care
and attention.

* Pre-paid Plans Available *

* Private Chapel of Rest *

* Floral Tributes and Memorials *

* Home Visits Made *

Tel: 01263 735161 (24 hrs)

2-4, Norwich Road, Aylsham

www.ivanfisherfunerals.co.uk



Now in our 11th year!

Monthly classical concerts
Thursday lunch hour or Saturday evenings
Aylsham Parish Church

John Snape 01263 768441

www.aylshammusic.org

Little Barningham

Sun 13 12.30pm **Community Sunday Christmas Lunch** - Village Hall

WOW- and that is not only the weather! Even on a very dull day, the autumn leaves were so vibrant it lifted the spirits. Is it my imagination, or were the colours even brighter than usual this year?

Remembrance Sunday at the War Memorial was well attended, with just over 20 villagers and visitors paying their respects, followed by the usual Community Sunday refreshments in the warmth of the church.



Derek Wintle
570097

The next Community Sunday will be the on 13th December, when there will be the now usual Christmas lunch in the village hall. Cost will be £7, and children under 12 will be FREE! Any surplus monies plus voluntary donations will go to the charity Crisis at Christmas for homeless people. Please call Sue on 570091 by 6th December at the latest as places are limited. It is a wonderful two-course traditional Christmas luncheon with all the trimmings. A vegetarian option and gluten-free Christmas pudding will be available on request at time of booking.

At the recent PCC meeting it was decided to apply for a Faculty to enable us to have a lavatory with hand cleansing facilities housed within a shed in the church grounds. It is becoming more self evident that a loo is necessary!

Start planning your gardens for next year as it is hoped that sometime in 2016 we can arrange an Open Gardens Day.

Harold Hooker is making a slow recovery and we look forward to seeing him again at one of our Community Sundays.

The cold and dark days of winter will soon be upon us, but we look forward to the time when, soon after Christmas, the snowdrops and early daffodils will arrive to delight us and lift our spirits.

In the mean time, let us enjoy Christmas and the wonder of it. And remember: spring is out there waiting!

Coastal Landscapes of East Anglia - Aylsham WEA

This course, led by Chad Goodwin, tries to unravel this extremely complex history. It aims to help you understand why our coast looks the way it does, and it attempts to outline the future.

Starts: Wednesday 13th January 2016, 14.30 – 16.00

Where: The Friends Meeting House, Peggs Yard, Red Lion Street, Aylsham, NR11 6ER

Cost: £48 for 10 sessions. First week is a free 'taster'

Information: 01603 279166, or email weaaylsham@gmail.com

Baconsthorpe Village Hall

Ideal for Parties and Receptions

Fully-equipped kitchen; matching crockery
for 100 settings; new tables and chairs

Large Main Hall or Committee Room

Charges: £8 per hour – £25 deposit will be
required to cover damages or breakages

To book: Evelyn 577315 or John 711320

FIREWOOD

Hard, Mixed or Soft Wood
2, 3 or 4 Loose m³ Loads

Tree Surgery & Felling
(5 Million Public Liability / NPTC Qualified)

James Barker

01263 577500 / 07799 784085

Matlaske

100 Club

£25 Michelle Amis, £10 June Norman, £5 Ian Moore

Welcome to Lucy and Andrew who have moved into Oak Dene.

If anyone feels able to volunteer to support the Matlaske church flower list for next year, please contact Richenda Riches on 577736. People on the rota undertake a 3-week responsibility to arrange and take care of the two small vases on the main altar and the two tiny posy-vases on the side altar. The church is cool most of the year round so the flowers tend to stay fresh if they are well watered, and only usually need small amounts of replenishing over the 3-week time. There is no pressure to use real flowers if volunteers would prefer to put in silk flowers and so not have to check them each week.

As well as being in place for services, the flowers in our church are greatly appreciated by visitors, and help to show that the church is cared for. The majority of our current, loyal and long-serving volunteers are elderly, and it is hoped that their responsibilities may be eased a bit next year. All offers of support will be warmly welcomed from family teams, men and women alike, and although there are gaps on our rota at certain times next year, everyone is flexible if new volunteers have preferences about when they can help.



Florence Hunt
577363



Four Seasons Garden & Property Maintenance

pruning • fencing
hedge trimming • leaf clearing
garden clearance • tidying borders
lawn management • cleaning gutters
small tree removal • painting & decorating
building small garden walls • repointing brick and flint

Fully insured with 10 years experience

Ben Radley
07776 197288 01263 577569 b_radley@hotmail.co.uk



CORBETT WOODWORK

Furniture, joinery, lettering & relief
carving, repairs
Estimates and advice free

Workshop 01263 587111
Gallery 01263 587268
The Street, Corpusty

R Wells Memorials



Your Independent Memorial Mason
Memorials in marble, stone and
various coloured granites

Brochures upon request

Workshop: 01603 755524 Office: 01603 485691
www.rwellsmemorials.co.uk
Unit 8 Sawmill Close, The Street, Felthorpe,
Norwich NR10 4BH

Reflections from the Rectory



Marion Harrison

For most of us December is chaotic. Filled with trips to the shops trying to find the perfect present. We spend time cooking far too much food. We dust off the boxes of decorations stored away from last year. We find the perfect tree and hang our lights upon it. We make time to write all our cards and rush to catch the last post for delivery before Christmas. Each year the list of people we wish to remember seems to get a little longer and the time to prepare for the festive season, a little shorter. And in all this

chaos it's very easy to lose sight of what these preparations are meant for and to forget who it is we are getting ready to greet.

The church year ends towards the end of November when we celebrate Christ the King. The new church year starts on the last Sunday in November with the four weeks leading up to Christmas and the birth of Jesus. The season known as Advent. It's a time of preparation and waiting. A time to reflect on the past year with its highs and lows and what our faith has brought to our lives. It is also a time to think about how we will meet our God in the mystery and simplicity of the Christmas story.



Illustration by Ian Summers

For me the glory of Christ's birth is in all the things that didn't happen.
He was born not in a palace, but in a stable.
He was born not of wealthy parents but of a poor young girl and her betrothed.
He was not wrapped in satin or silk but in strips of peasant's cotton.
He was not waited on by servants but was surrounded by the animals he created.
He was not bowed to by the prestigious but was greeted with wonder by hill side shepherds.
He was not acknowledged by the powerful but honoured by the wise.
He came to us as a gift, our gift for all time.
He came for every one of us and he came with joy.

And so, from all the ministry team, Brian, Gill, Judy and myself, we wish everyone a joy filled Christmas and a very happy New Year.

Rev'd Marion Harrison

Benefice Christmas Services 2015

Pull-out poster designed by Ian Summers

Wed	2 Dec	7:30 pm	Compline for Advent	Plumstead
Sun	6 Dec	5 pm	Carols by Candlelight	Wickmere
Wed	9 Dec	7:30 pm	Compline for Advent	Saxthorpe
Fri	11 Dec	7 pm	Carols in Village Hall	Baconsthorpe
Sun	13 Dec	11 am 4 pm 4:30 pm	Toys and Tins Carol Service Christingle	Saxthorpe Edgefield Plumstead
Wed	16 Dec	7:30 pm	Compline for Advent	Hempstead
Sun	20 Dec	10:45 am 6 pm	Carol Service Family Carol Service	Barningham Winter Little Barningham
Tue	22 Dec	3 pm	Crib Service	Itteringham
Wed	23 Dec	7:30 pm	Compline for Advent	Edgefield
Thu	24 Dec	3 pm 5:30 pm 10 pm 11:30 pm	Crib Service Candlelight Carols Late Mass Midnight Mass	Hempstead Saxthorpe Edgefield Matlaske
Fri	25 Dec	9 am 10:45 am 11 am	Christmas Day HC (CW) Christmas Day HC (BCP) Family Service	Little Barningham Baconsthorpe Wickmere
Sun	27 Dec	10:30 am	Benefice Holy Communion	Saxthorpe

Carol Services

Joyful singing of well-known carols with readings telling the story of Christmas. Singing will be led by our Benefice Choir at the service held at Barningham Winter.

Christingle Service

A beautiful candlelit service for the whole family. Our Christingle celebrations will include singing, prayers, and the lighting of Christingle candles. The Christingle is an orange, tied with red ribbon, with dried fruits and a lit candle. These are then taken home from the service. There will be a collection in aid of The Children's Society.

Crib Services

The crib service is for the whole family, but especially delightful for children. During the service the children will place figures in the crib. A lovely service to help us focus on the real meaning of Christmas.

Compline for Advent

Prayers and quiet reflection for Advent.

Toys and Tins Service

If you can, please bring toys, tins and packets of food to this service. Your gifts will then be distributed by the Salvation Army to needy families.

Church Services for December

Midweek Service Wednesdays 9.00am: Matlaske

6th December - Advent 2 Malachi 3:1-4 / Philippians 1:3-11 / Luke 3:1-6

9.00	Holy Communion <i>CW</i>	Little Barningham
9.15	Holy Communion <i>BCP</i>	Hempstead
10.45	Matins	Plumstead

13th December - Advent 3 Zephaniah 3:14-end / Philippians 4:4-7 / Luke 3:7-18

9.00	Holy Communion <i>CW</i>	Itteringham
9.15	Holy Communion <i>BCP</i>	Matlaske
10.45	Matins	Hempstead

20th December - Advent 4 Micah 5:2-5a / Hebrews 10:5-10 / Luke 1:39-45(46-55)

8.00	Holy Communion <i>BCP</i>	Wickmere
9.15	Holy Communion <i>BCP</i>	Plumstead

Church Services for January

Midweek Service Wednesdays 9.00am: Saxthorpe

3rd January Jeremiah 31:7-14 / Ephesians 1:3-14 / John 1:1-18

9.00	Holy Communion <i>CW</i>	Little Barningham
9.15	Holy Communion <i>BCP</i>	Hempstead
10.45	Matins	Plumstead
11.00	Family Service	Wickmere

10th January - Baptism of Christ Isaiah 43:1-7 / Acts 8:14-17 / Luke 3:15-17,21-22

9.00	Holy Communion <i>BCP</i>	Itteringham
10.45	Matins	Matlaske
11.00	Morning Praise	Saxthorpe
11.00	Holy Communion <i>TL</i>	Edgefield

17th January - Epiphany 2 Isaiah 62:1-5 / I Corinthians 12:1-11 / John 2:1-11

8.00	Holy Communion <i>BCP</i>	Wickmere
9.15	Holy Communion <i>BCP</i>	Baconsthorpe
10.45	Matins	Hempstead
11.00	Morning Prayer	Little Barningham

24th January - Epiphany 3 Nehemiah 8:1-35-6,8-10 / I Corinthians 12:12-31a / Luke 4:14-21

9.00	Family Service	Edgefield
9.15	Holy Communion <i>BCP</i>	Barningham Winter
11.00	Morning Prayer <i>BCP</i>	Itteringham
11.00	Holy Communion <i>CW</i>	Saxthorpe

31st January - Epiphany 4

10.30	Benefice Holy Communion <i>BCP</i>	Saxthorpe
-------	------------------------------------	-----------

CW = Common Worship *BCP* = Book of Common Prayer *TL* = Traditional Language

Plumstead

Fri 18 6.30pm **Mulled Wine & Mince Pies** - St Michael's Church

Tue 22 6.00pm **Village Carol Singing** - St Michael's Church



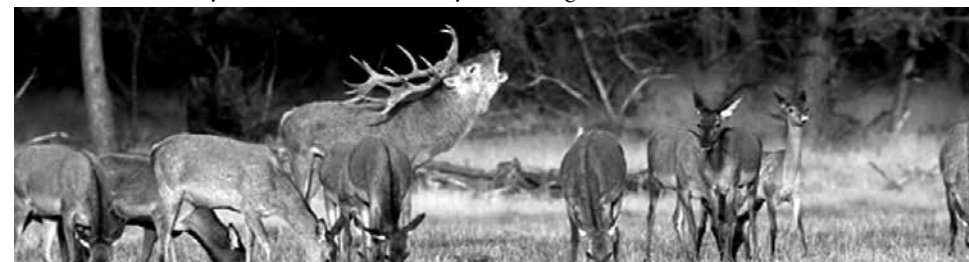
Mary Lintott
577718

By the time you read this, there will be about three weeks left to Christmas, and many of us will be in the usual flurry of present buying, Christmas parties, school nativities and carol services which all make up the joys of these weeks in December. I hope you all have a very happy time.

Plumstead will be having its own version of a Christmas party to which all are welcome. PEG will be hosting the now familiar Mulled Wine & Mince Pies in the Church on Friday 18th December at 6.30pm. Please do come and join us - the Church will be warm, the company friendly and most importantly the drinks and food will be free. It's a wonderful start to the festive season.

Eleanor and Brian will be leading the second year of carol singing around the village at 6.00pm on Tuesday 22nd Dec. We shall meet at the Church and it is suggested that you wear light coloured or fluorescent clothing. Also remember to bring a torch. In particular families are most welcome.

We wish Melanie Faulkes a speedy recovery from her ongoing chemotherapy treatment. Our best wishes also to Mervyn Gibbons who is slowly recovering from his recent illness.



The saga of the red deer continues - I was delighted to see the editor's piece last month and as a result of that I received this email from Steve and Carolyn Price:

Just read the village newsletter and saw your comments about red deer in the village. We have been lucky to see them from our lounge window in the fields at the back of us fronting Northfield Lane. We saw about ten in a group a fortnight ago, with a stag leading the way from one of the distant fields through the hedges to another field, and saw a smaller group a few days before. Ben Radley's father is a gamekeeper at Barningham and says there is apparently a small herd on the estate but they spend much of their time hidden in the woods. He suspects that they may have got spooked by the recent shoots and moved out of cover for a while. We haven't seen them since but they were an impressive sight, even from distance, so keep your eyes peeled when you're at the top of your garden and you may just be lucky!

Well, as it happens, when I was walking over Oakhills recently and saw about six deer, a mixture of hinds and young, but no Stag, sadly. Do let us know if and where you see them.

For those of you who have contacted me regarding the creation of some bunting for the village we shall now get together after Christmas - I will be in touch in due course.



Do you need a Helping Hand?

We offer a **Live-in Care** service which enables you or a loved one to remain at home with compassion and dignity. So if you are looking for an **alternative to residential care** or as a **short term answer** whilst recovering from illness or operation - then we're here to help.

Call our **local care team** on **0808 180 1016** or visit **www.helpinghands.co.uk**

'Sharp Lines' 'Quality Finish'



Kevin Nichols

Painter & Decorator
Interior & Exterior

01263 861547 07795 077090

Lloyd Durham

Independent Family

Funeral Directors



01263 713113 (24 hours)

11a Avenue Rd,
High Kelling,
Holt NR25 6RD.

Email: lloydurham1933@aol.com

www.northernorfolkfuneralservices.co.uk

Funeral Director:

Helen Wickes BSc, dipFD NAFD

**SURE Computer
Systems Limited**

- ✓ Custom Built Quality PC Systems
- ✓ Laptops ✓ Tablets ✓ Upgrades
- ✓ Repairs ✓ Antivirus
- ✓ Troubleshooting
- ✓ Onsite Home And Business Technical Support

The Kongskilde Building, Hempstead Road, Holt, Norfolk, NR25 6EE

Email: info@surecomputers.co.uk

Fakenham	Holt
01328 888060	01263 711052
07881 650615	07979 238114

THWAITE

30 Years Experience

SIGNS & GRAPHICS

From **TRADITIONAL SIGNAGE** to **MODERN COMPUTER CUT IMAGES**
Vehicles, Shops, Boats, Houses, A Boards, Logo's
Magnetics, Windows, Restoration & Repairs

LARGE Format Digital Printing for -
Banners, Posters, Canvas, Photos, Panoramas

Contact **Paul 01263 768082**
ROSE COTTAGE, THWAITE COMMON, ERPINGHAM



North Norfolk Plumbing & Heating



01263 577800 / 07880 722707

Registered Installer • Service • Repairs • Bathrooms
Natural Gas • LPG • Oil • Heat Pumps

www.northernorfolkplumbingandheating.co.uk

Church Barn, Sustead, Norfolk, NR11 8RU



Legal Advice?

Make us your first call

01263 712835

law.holt@hayes-storr.com

www.hayesandstorr.co.uk

FAKENHAM • HOLT • HUNSTANTON •
SHERINGHAM • KING'S LYNN • WELLS

Saxthorpe with Corpusty

Thur 3	3.30pm	Families Together Christmas Party - Village Hall
Tue 8	11.00am	North Norfolk Knitters - Dukes Head
Wed 9	12noon	LinC Christmas Lunch - Dukes Head
Thur 10	9.00am	Christmas Tree Set Up - St Andrew's Church
Fri 11	10.00am	Christmas Tree Festival - St Andrew's Church
Fri 11	6.30pm	Christmas Tree Festival Preview - St Andrew's Church
Sat 12-Sun 13		Christmas Tree Festival - St Andrew's Church
Sun 13	11.00am	Toys & Tins Service - St Andrew's Church
Mon 14	9.00am	Christmas Tree Take Down - St Andrew's Church
Mon 14	6.30pm	Primary School Nativity - St Andrew's Church



Judith Banks
587319

St Andrew's Christmas Tree Festival



Friday 11th, Saturday 12th, and Sunday 13th December promises to be a splendid event. There will be a Preview Evening with seasonal refreshments on Friday 11th 6.30pm-8.00pm. The primary aim of the festival is to prepare to celebrate Christmas and show that the Christian faith is a living faith - right here in the community. Decoration on Thursday 10th December from 9.00am and taking down

on Monday 14th from 9.00am. The photograph shows a previous festival organised in St Mary's Church, Baconsthorpe, with a Christingle Service. We have been advised that the electricians in St Andrew's will stand each tree having its own lights. Any monies raised will help keep St Andrew's Church a vibrant feature in our local area. Refreshments available, admission will be £1, children free.

On Sunday 13th at 11.00am there will be the usual Toys & Tins Service, where offerings of labelled toys (by age and sex) or tins will be donated to The Salvation Army, Sheringham Christmas Appeal. For more information ring Heather Monks on 587118, or Judith Banks 587319.

The All Souls' service on 1st November was a sensitive occasion. Remembering our loved ones, who have died, is an important part of grieving no matter how many years have elapsed since their passing. "A lovely, moving, and helpful service." Thank you to those who, annually, make this a very worthwhile event.

A few years ago I was asked to enquire about 'No Cold Caller Stickers' from Norfolk County Council, which were received and distributed. If anyone would like one, free of charge, they should call Trading Standards Service on 0344 800 80 20, or email: trading.standards@norfolk.gov.uk

The Corpusty Bonfire and Firework display were as well supported as normal, with roads closed and pedestrian safety at the forefront. A spectacular and noisy pyrotechnic display was much appreciated. Thanks to those who organised it, and also to Audrey Stuart for the photo of the Bonfire in last month's C & V News.

Ann and Aubrey Poberefsky wish to thank the people of the village for their help and support and say please visit if in Sheringham. Their address is 2 Woodlands Rise West, Sheringham, NR26 8NZ.

R G & M Wadlow & Son Ltd

*Your local joinery shop
established 1985*

*For all your joinery needs:
new windows, doors etc, hand-made
kitchens, wardrobes and bookshelves.
Full paintshop facilities.*

*Full fitting service available and small
building projects undertaken eg
roofing and extensions, drain clearance
and relaying new drains etc*

Telephone 01603 308928

Mobile 07768 086462

Email bobwadlow2@btconnect.com

www.wadlowjoinery.co.uk

Bure Valley Community Centre Itteringham



For all your function needs:
Wedding Receptions, Dances, Dinners
Indoor Sports/Recreation etc.
For bookings etc call 01263 587 564

Liz Kidd Acupuncture

Injury, illness, stresses & strains can all damage the quality of our lives.
I am passionate about helping people overcome these issues so they
can enjoy a full life.

Acupuncture can help you achieve that.

Please call 07909 925499

Email: liz@lizkiddacupuncture.co.uk

www.lizkiddacupuncture.co.uk

Liz Kidd BSc (UEA & Kingston) LicAc FCA MBACC

FREE
15 Minute
Consultation

Jill Hill

Designer and maker
of special embroidered garments,
accessories and art textiles.
Mending and alterations
also undertaken.

01263 584155 or 01263 587268

or call at

The Old Workshop Gallery
Corpusty

www.corpustygallery.com





**DAVID THOMPSON
MASTER
CHIMNEY SWEEP**

All chimneys, flues & appliances swept
Brush and vacuum used
CCTV Chimney surveys
Bird/rain guards, vent caps
and cowls supplied and fitted
NVQ qualified chimney engineer

01328 851081
www.the-sweep.co.uk
D. Thompson Chimneys Ltd

CLEAR CRYSTAL WINDOW CLEANING

Water-Fed Pole System
DOMESTIC AND BUSINESS
CONSERVATORY ROOFS ALSO
CLEANED
Fully Insured, Friendly and Reliable
Call Gary on 0787 9007440

Andrew Dixon

PAINTER & DECORATOR

*Interior and Exterior
Low Cost - High Standard*

Call Andrew

01263 860204

07770 447714

Wickmere with Wolterton

Sun 6 5.00pm **Candles, Carols & Christmas Cheer**
Sat 12 6.30pm **Christmas Lights Switch-On - Village Hall**



Helen Goulty
570043

It is with great sadness I have to report that John Hardy passed away last month.

John was born on an ex-WW2 motor torpedo boat moored at Brundall, where he spent his childhood. He studied engineering, and worked as a builder until he met sculptor Nick Deans and taught himself to make moulds and casts of Nick's sculptures. Other sculptors heard of his skills, and he soon had a full-time job making casts for many different and interesting people. John lived in Wickmere from 1980.

John was a reliable, steadfast support for the village hall through its rebuilding and many social activities. He was a lovely man, always surrounded by young children, encouraging them to embrace life, whether on go-carts, on bikes or rebuilding the tree swing! He will be greatly missed by many, and our love and thoughts go to Lesley and her family.

Richard Hembling has been elected as the new Chairman of the Village Hall Committee. Good luck in your new position.

Sunday 6th Dec - 5pm Come along and celebrate the start of the festive season with Candles, Carols and Christmas Cheer. With mulled wine and nibbles after some hearty singing, what more could you want?

Saturday 12th Dec - 6.30pm Wickmere Christmas Lights switch-on, followed by refreshments at the village hall.

Watch out for posters for a bingo night. Barbara will be organising this.

The long awaited Memorial Bench should finally be in place in January.

The footpath decision was not quite as final as thought. The editor has received a letter from the landowner's agent which includes the following: "My clients, who own the land concerned, strongly dispute the Council's conclusion and will be objecting. The Council will have to refer the order and objections to the Planning Inspectorate, which will appoint an independent Inspector to decide the matter, probably after holding a public inquiry. Only when the Inspector makes his or her decision will the matter be 'resolved'."

We wait and see.

EDGEFIELD NURSERIES

GARY SILLIS

Tel: 01263 587457

Nursery open all year round: wide variety of
seasonal pot plants, shrubs & perennials

Specialists in Fuchsias

The Nursery is situated on the B1149

Norwich to Holt Road

between Saxthorpe & Edgefield

HEMPSTEAD VILLAGE HALL

Available for hire

Facilities include tables & chairs,
plates & cutlery for up to 80; stage;
overhead projector suitable for films
and computer presentations

Contact Su Summers 01263 710702

su@linaria.co.uk



Bed and Breakfast

Blacksmith's Cottage, Baconsthorpe
Emma Youngs
01263 570252 or 07884 432412
www.baconsthorpemeadows.co.uk

CAST IRON COOKERS



Service & Repair

Jon Cooper
Dales House, The Street,
Baconsthorpe NR25 6AB
01263 577527 or 07767 494369

Garden & Home Helpers

All basic help for you in your house or garden by husband and wife team from Matlaske. We can do the whole job or simply help you to complete a task. Hourly or fixed-rate prices from £10 per hour. References available.



07909 183190 07950 822802

H.V. GRAVES

24 Gladstone Place, Briston 01263 860333
Family Butcher
Poulterer & Game Dealer
Licensed to sell **Wines & Spirits**
In-town Butchery at **Larners of Holt**
01263 710000
Fresh Bread & Cakes from our own bakery
Weekly Deliveries in our refrigerated vans



IYENGAR YOGA CLASSES

*Stretch, Strengthen,
Balance, Relax*
Beginners and experienced students welcome.
Edgefield, Reepham, Norwich and Fakenham
Daytime and evening classes
Block booking @£8 per class after your first class
Contact Liz Ward: 07740 105 339
e-mail: jlward@talktalk.net

Your local, friendly filtration experts! 01603 871594

Water softeners & scale reduction filters
Drinking water filter systems & filter taps
Whole house filter systems
Salt supplies and replacement filter cartridges



3&5 Old Winery Business Park, Chapel St, Cawston. NR10 4FE
www.freshwaterfilter.com (adjacent to Broadland Wineries)

Jones the Sweep




Members of European
Federation of Chimney Sweeps
Highlands, Southrepps Road,
Antingham, North Walsham NR28 0NW
hjjones92@yahoo.co.uk
01263 833362 07799 484012

C. H. MATTHEWS

Plumbing and Heating



Juniper Lodge, Hempstead,
Holt, Norfolk NR25 6TW
Tel: Holt 713374

Christmas Wordsearch

Words can go forwards, backwards, up, down, across or diagonally.

ANGEL BETHLEHEM HOLLY IVY JESUS JOSEPH MARY
PRESENTS REINDEER RUDOLF SANTA STAR TINSEL


J	M	H	W	E	B	H	J	I	W	R	H	I	Y	S
S	E	D	K	C	E	R	N	H	E	S	A	N	T	A
Z	L	S	L	Q	T	O	Z	I	P	C	X	L	O	Z
R	E	J	U	O	H	W	N	P	Y	E	T	T	X	R
H	S	L	B	S	L	D	S	T	N	E	S	E	R	P
P	N	L	N	M	E	M	Y	M	L	W	B	O	Y	Y
C	I	J	A	E	H	Q	J	R	U	J	Z	K	J	V
Z	T	H	R	H	E	F	F	R	A	T	S	M	K	I
Q	T	C	O	U	M	L	S	K	K	M	E	Y	A	F
B	Q	L	E	I	O	J	A	A	V	D	H	A	W	F
S	L	Z	N	D	P	Y	K	J	D	T	A	E	R	Q
Y	F	L	U	K	G	V	L	S	V	O	N	D	C	L
O	M	R	C	N	H	I	U	V	Q	K	G	M	D	W
C	C	K	D	M	U	E	M	U	Z	I	E	A	J	D
M	V	L	B	K	K	B	C	Y	X	J	L	Z	D	D

See page 24 for solution

From Christmas Newsletters Past: 1994

Looking after baby hedgehogs

1. You must de-flea the hedge hog by placing on a newspaper in a cardboard box, tip a strip of cat flea powder all down its back, cover with newspaper. Leave for 10 minutes, it will then be surrounded by dead fleas - in a ring.
2. Keep warm, most important. If it gets cold it will try to hibernate instead of feeding. It must weigh at least 1 lb before you allow it to hibernate.
3. Keep in a ventilated hutch or box with feeding area & separate sleeping area. Clean out regularly.
4. Feed on cat/dog food, but not fish varieties - not good for them - always clean water to hand.
I find placing their box next to an Aga/Raeburn excellent for warmth.
Release "hog" in May, after frosts, when perhaps you can let it go well away from roads when it weighs 1 lb or over
NEVER GIVE IT MILK as this will give it diarrhoea.
It takes a lot of commitment over the winter.





Holy stond in the halle, fayre to behold;
Ivy stond without the door; she ys full sore a cold.

This carol recording the use of holly for decorating the home written in the time of Henry VI is perhaps the earliest note of this familiar custom in England. The early Christians, however, used holly in Rome where it had long been the custom to send friends boughs of holly at the festival of Saturnalia as emblems of good wishes.

Today we have numerous variegated hollies as well as the green one. The foliage will give you colour the year round, and the female tree will bear its scarlet berries for six months. They will grow in sun or shade, poor soil or good. They make the best of all impenetrable hedges, very durable, animal proof and seldom damaged by insects. One snag, you will want gloves for pruning or clearing up the dead leaves which are almost rot proof.

How about giving container-grown gold or silver variegated hollies as Christmas presents as an emblem of your good wishes?
J.D.

Wordsearch solution from page 23

J + + + + B + + + + R + + + +
+ E + + + + E + + H E S A N T A
+ L S + + T + + I P + + + + +
+ E + U + H + N + + E + + + +
+ S + + S L D S T N E S E R P
+ N + + + E + Y + + + + O + +
+ I + + E H + + R + + + + J +
+ T + R H E + F R A T S + + +
+ + + O + M L + + + M + + + +
+ + L + + O + + + + + + + + +
+ L + + D + Y + + + + + A + + +
Y + + U + + V + + + + N + + + +
+ + R + + + I + + + + G + + + +
+ + + + + + + + + + E + + + +
+ + + + + + + + + + L + + + +

North Norfolk Tree Services

For all your tree surgery needs

Over 30 years experience

Fully insured, based in Holt

Call for a free no obligation quotation
and advice

Jeremy Cox

01263 713389

07503 885499

nntrees@gmail.com



Regular Events

Baconsthorpe Village Hall

| | | |
|---------|---|---------------------------|
| 7.30pm | Line Dancing - 711320 | Mondays |
| 10.00am | Diocesan Play Van - 07918 027092 | Tuesdays during term time |
| 7.30pm | Carpet Bowls - 711320 | Tuesdays during term time |

Corpusty Village Hall

| | | |
|------------------|--|---------------------------|
| 2.00pm - 4.00pm | Bure Valley Quilters & Stitchers | Second and fourth Mondays |
| 2.00pm - 4.00pm | Short Mat Bowls | Tuesdays |
| 10.00am - 12noon | Norfolk Knitters £7 for a 4 week term or £2 per week
Rita Taylor 587507 K2togp1@btinternet.com | Second Tuesday |
| 10.00am - 12noon | Art Group | Thursdays |
| 9.30am - 11.30am | Toddler Group | Fridays during term time |

Edgefield Village Hall

| | | |
|---------|---|---------------|
| 7.00pm | Parish Council Meeting | Third Monday |
| 2.00pm | Tuesday Club | First Tuesday |
| 10.30am | Coffee Morning - Jeff Witts 587661 | Last Thursday |

Hempstead Village Hall

| | | |
|---------|---|-----------------|
| 10.00am | Charcoal Drawing £4 includes coffee, biscuits and paper
Mike Thody 711282 | Tuesdays |
| 7.30pm | Film Club - Mike 711282 / Yvette 712460 | Third Wednesday |

Mobile Library Van

| Thur 24 Dec | Thur 21 Jan | Thur 18 Feb |
|---------------------|-------------------------------|-------------|
| Itteringham 11.00 | NR11 7AP The Common | |
| | 11.15 NR11 7AY The Rectory | |
| Lt Barningham 12.05 | NR11 7AG The Street | |
| Matlaske 12.30 | NR11 7AQ Old Post Office | |
| Plumstead 1.15 | NR11 7LG Walnut Farm | |
| Baconsthorpe 2.45 | NR25 6LJ Council Bungalows | |
| | 4.10 NR25 6LG Old Post Office | |
| Hempstead 3.20 | NR25 6LE Hare & Hounds | |
| | 3.40 NR25 6TL Telephone kiosk | |

| Thur 10 Dec | Thur 7 Jan | Thur 4 Feb |
|-----------------|----------------------------------|------------|
| Saxthorpe 11.50 | NR11 7BL Old Post Office | |
| Corpusty 12.10 | NR11 6QP School | |
| | 12.40 NR11 7BU Great Farm Cott's | |
| | 2.00 NR11 6QJ Adams Lane | |
| | 2.15 NR11 6QL 3 Council Houses | |
| | 2.30 NR11 6QL 16 Council Houses | |
| Edgefield 3.15 | NR24 2AX The Street | |
| | 3.40 NR24 2AL The Memorial | |

| Wed 23 Dec | Wed 20 Jan | Wed 17 Feb |
|-----------------|-------------------------|------------|
| Wolterton 12.45 | NR11 7LY Wolterton Hall | |
| Wickmere 1.15 | NR11 7ND Village Sign | |

Post Offices

Baconsthorpe Village Hall

| | |
|--------------|------------------|
| Tuesdays | 12.30pm - 4.00pm |
| Fridays | 9.30am - 12.30pm |
| All services | |

Corpusty Stores 587202
Monday-Saturday 9.00am - 12.00noon
All services including Euros

Itteringham Village Shop 587325
Monday-Saturday 9.00am - 5.00pm
Sunday 9.00am - 12.00noon
All services including Euros

Holt Library

9 Church Street, Holt NR25 6BB 712202
Mon Wed Sat 9.30am-1.00pm
Fri 9.30am-6.00pm



Newsletter Team

Editor Michael McMahon
mjmcm25@gmail.com

Copy Date
Closest Wednesday to 20th of the month

Design Karen Hall 577547
Print Barnwell Print Ltd, Aylsham 732767
Advertising Clive Rammell 711366
Distribution Clive Rammell 711366
Treasurer Corinne Youngs 577263

Postal Subscriptions
£10 per year –please contact Corinne

Next editorial meeting Mon 18 Jan 11.00am

To download previous editions visit:
www.churchandvillagenews.org.uk

Calling all Photographers!

We'd like to publish more pictures of our beautiful surroundings. Please send some in!



Village Correspondents

| | | |
|----------------------|----------------|--------|
| Baconthorpe | Ro Hardingham | 577262 |
| Barningham Winter | Sara Buxton | 577207 |
| Edgefield | Richard Peaver | 587486 |
| Hempstead | Sharon Hannah | 711769 |
| Itteringham | Eric Goodman | 587278 |
| Little Barningham | Derek Wintle | 570097 |
| Matlaske | Florence Hunt | 577363 |
| Plumstead | Mary Lintott | 577718 |
| Saxthorpe & Corpusty | Judith Banks | 587319 |
| Wickmere & Wolterton | Helen Goulty | 570043 |



Parish Council Chairs

| | | |
|-----------------------|-----------------|--------|
| Baconthorpe | Jonathan Cooper | 577527 |
| Edgefield | John Seymour | 587504 |
| Hempstead | Paul Sanders | 713217 |
| Itteringham | Jimmy Fowell | 587356 |
| Lt Barningham | Harry Betts | 577640 |
| Matlaske & Barningham | Sara Buxton | 577207 |
| Plumstead | Alastair Brown | 577447 |
| Saxthorpe & Corpusty | Imogen Waterson | 587610 |
| Wickmere | Leslie Ash | 577566 |

Church People



Priest-in-Charge

Rev Marion Harrison 587977
Itteringham Rectory, The Street
Itteringham NR11 7AX
marion681@btinternet.com

Honorary Assistant Curate

Rev Brian Faulkner 577868
Oaktree Cottage, Cherry Tree Rd
Plumstead NR11 7LQ
brianfaulkner@btinternet.com

Lay Reader Gill Peat 734226
AWA Judy Rosser

Church Wardens

| | | |
|-------------------|------------------|--------|
| Baconthorpe | Tessa McCosh | 577611 |
| Barningham Winter | Amelia Courtauld | 577250 |
| Edgefield | Emma Cletheroe | 587279 |
| | Angela Turner | 587292 |
| Hempstead | Ann Udale | 713656 |
| | Su Summers | 710702 |
| Itteringham | Ray Covell | 587659 |
| | Derek Turnbell | 587259 |
| Little Barningham | Pamela Daniels | 577436 |
| | Michael Daniels | 577436 |
| Matlaske | Thomas Courtauld | 577250 |
| Plumstead | Eleanor Faulkner | 577868 |
| Saxthorpe | Merlin Waterson | 587610 |
| | Heather Monks | 587118 |
| Wickmere | Tony Hurn | 577309 |

Disclaimer: The views expressed in this publication are not necessarily the views of the Church & Village News. Apologies if contributed material is not published due to space constraints. All facts are believed to be correct at the time of going to press.



Carpets, Vinyls, Beds, Blinds, Rugs,
Carpet Cleaner for Hire
35 Red Lion Street, Aylsham
Norfolk NR11 6ER
Tel: 01263 732066
Fax 01263 734139

It Pays to Advertise

With a free distribution to over 1,100 households throughout the year, advertising in this newsletter is extremely good value. For a price list and full details please contact:

Clive Rammell
cliverammell@outlook.com
01263 711366

When you just don't seem to have enough time
There is always

An Extra Hand

www.kirstieplayfair.wix.com/anextrahand

From dog walking to school runs, house sitting to cooking and everything in between.

Kirstie Playfair 07776 188026

DBS Approved

Fully Insured



Upholstery, Curtains and Blinds

- Hand made sofas and chairs
- Traditional & contemporary Re-Upholstery
- Made to measure curtains and blinds
- Vertical, Roller & blackout blinds
- Loose covers
- Curtain tracks & poles supplied and fitted
- Repairs and alterations



At Williams all of our work is carried out at our West Runton premises as it has been for the last 30 years, no middlemen means greater value for money.

Whether it's a spring repair, new seat foams or a complete lounge suite with co-ordinating curtains you can be guaranteed of first class customer service and attention to detail.

In our showroom we have pattern books from Parktex, Linwood etc and we are proud to be Sandersons fabric and wallpaper specialists.

We now stock a range of home accessories including a large selection of Dora Designs doorstops and draught excluders.

Williams
OF WEST RUNTON

5 Station Road,
West Runton, Norfolk.
Tel: 01263 837611
www.williamsfwestrunton.co.uk

Louise Ellis
Foot Practitioner
TCFCPa, RGN

Routine Nail Care
Hard Skin Removal
Corns
Orthotics

Home Visits
Tel: 07710 435123



Hunny Bell Cross Country
on the Stody Estate

Sunday 28 February 2016

Seniors/Veterans (5 miles) £10 entry (£15 on the day)
Under 13/17s (2.4/2.6 miles) £5/£8 entry
+ Dog Walk (2.5 miles) £10 entry (£15 on the day)

Secure your place
www.break-charity.org/support-us/events
01603 670109

Reg. Charity No. 286650

break
Charity
The National Farmers Union Mutual Insurance Society Limited



WHICH? BELIEVE
WE'RE THE
BEST
INSURANCE
SERVICES
PROVIDER
IN THE UK

What a great company to do business with

Please talk to your local agent for more details.

Call 01263 712306
for a quote or pop in
NFU Mutual Office,
The Secret Garden
15-17 Appleyard
Holt, Norfolk
NR25 6AR

NFU Mutual
INSURANCE | PENSIONS | INVESTMENTS

It's about time[®]

Agent of The National Farmers Union Mutual Insurance Society Limited. For security and training purposes, telephone calls may be recorded and monitored.

Meet the Neighbours - Mark Sayers



It was a windswept, rainy afternoon when I visited Mark Sayers, the award-winning head chef at the Saracen's Head in Wolterton, but the menu chalked on a blackboard in the bar was enough to banish any winter blues. There was a starter of pigeon breast with black pudding and apple salad, and a main of pot-roasted partridge with cinnamon and apricots, for instance, or game terrine and slow-cooked belly pork. "If you look at my menu", says Mark, "my aim is that you should know what month of the year it is in Norfolk."

Mark, aged 50, was born in Blakeney, went to school in Wells and was apprenticed at Gasches in Weybourne. He was a chef in London, Scotland and Sydney and was then for 13

years head chef at the Norfolk Mead Hotel in Coltishall. He has been at the Saracen's Head for three and a half years, and lives in Wickmere with his wife Fiona and son Jake. He can see the Saracen's Head from his garden.

The restaurant has recently won two awards - the *Norfolk Food Heroes* at the Aylsham Show last year for its use of local produce, and this year the *East of England Sporting Pub of the Year* in the Country Life & Countryside Alliance Awards. Among the Saracen's guests have been Jenny Agutter, Michael Palin, John Hurt and members of Blur.

His food really is local: the beef comes from Blickling, the lamb from Wolterton and the Daniels at Barningham Green, his cheeses include Ellie Betts's Norfolk Dapple from Little Barningham, and the game shot on Saracen's Head shooting days goes to White's in Aylsham and once plucked, back to Mark's kitchen. The shiitake mushrooms come from Little London.

The most popular dishes among customers are crab, often with pink grapefruit and a light cheese topping, slow-cooked shoulder of lamb and sticky toffee pudding - "Week in, week out everybody loves sticky toffee pudding!" New World Malbec is the most popular choice of wine.

Mark cooks on his days off - on Tuesday a spag bol perhaps, after playing five-a-side football in Fakenham, and probably fish on Wednesdays. His passions are food and football - he has supported the Canaries since he was seven.