

# Church & Village News

Baconsthorpe • Barningham Winter • Edgefield • Hempstead • Itteringham • Little Barningham  
Matlaske • Plumstead • Saxthorpe with Corpusty • Wickmere with Wolterton

April 2016



**Water on The Green, Edgefield**

by Jann Visconti

## Bird Watch - The Robin



Photograph by Jann Visconti

The robin has once again been voted Britain's favourite bird. Perhaps it's not too surprising, for the sight of one of these friendly little birds hopping across the lawn on a cold winter's morning is enough to brighten anyone's day. Besides, how many of our homes are brightened up each Christmas by colourful cards depicting the Robin Redbreast?

One way to attract robins to your garden is to feed them with meal worms. They are fairly expensive to buy, but robins absolutely love them, and as a result they can become quite tame. However, their natural diet consists of worms, spiders and various other insects, together with soft fruit and berries.

Robins sing throughout the year, and can occasionally even be heard at night, being fooled into singing by bright street lighting. It is their wistful

late autumn and winter song that I find

the most pleasing. Maybe it's simply because all the other birds have long fallen silent. However, I find there's something about their winter song that somehow fits the mood of a winter's day.

The numbers of robins are swollen in the winter by birds from Northern and Eastern Europe, so the robin that has been in your garden this winter may soon be on his, or her, way back across the North Sea any day soon. May they have a safe journey.

Because robins are often seen hopping around the feet of gardeners when busy digging, they are often thought of as friendly birds. However, nothing could be further from the truth, for they are very aggressive birds and will seldom tolerate other robins encroaching on their territory. They've even been seen attacking their own reflection in windows and car wing-mirrors.

Although this year's mild winter weather has been a disappointment for many birdwatchers, it has been a God-send for our songbirds. With so many threats to our birds nowadays, it's heart-warming to know that a good number of our birds should have survived this winter. Soon our summer visitors will be arriving on our shores once again. A little-ringed plover has already been seen on the Norfolk coast on the 8<sup>th</sup> of March. Listen out for the song of the chiff-chaff, they should be arriving any day soon. If you're out walking by the coast, keep a look-out for returning sandwich terns or for wheatears arriving on our coastal fields. Good luck!

David Braithwaite



## Newsletter Team

**Editor** Michael McMahon  
mjmc25@gmail.com

**Copy Date**  
Closest Wednesday to 20<sup>th</sup> of the month

**Design** Karen Hall 577547  
**Print** Barnwell Print Ltd, Aylsham 732767  
**Advertising** Clive Rammell 711366  
**Distribution** Clive Rammell 711366  
**Treasurer** Corinne Youngs 577263

**Postal Subscriptions**  
£10 per year –please contact Corinne

**Next editorial meeting** Mon 11 April 11.00am

To download previous editions visit:  
[www.churchandvillagenews.org.uk](http://www.churchandvillagenews.org.uk)



## Village Correspondents

**Baconsthorpe** Corinne Youngs  
corinne@avyoungs.com 577263

**Barningham Winter** Sara Buxton  
s.m.buxton@hotmail.co.uk 577207

**Edgefield** Richard Peaver  
rhpeaver@btinternet.com 587486

**Hempstead** Sharon Hannah  
shazyhannah@yahoo.co.uk 711769

**Itteringham** Eric Goodman  
perius@fast-mail.net 587278

**Little Barningham** Derek Wintle  
mike.gandy92@gmail.com 570097

**Matlaske** Florence Hunt  
fmhunt@gmail.com 577363

**Plumstead** Mary Lintott  
mary.lintott57@btinternet.com 577718

**Saxthorpe & Corpusty** Judith Banks  
mummybanks@hotmail.com 587319

**Wickmere & Wolterton** Helen Goulty  
goultyfamily@hotmail.com 570043

**Disclaimer:** The views expressed in this publication are not necessarily the views of the Church & Village News. Apologies if contributed material is not published due to space constraints. All facts are believed to be correct at the time of going to press.

## Church People



### Priest-in-Charge

Rev Marion Harrison 587977  
Itteringham Rectory, The Street  
Itteringham NR11 7AX  
marion681@btinternet.com

### Honorary Assistant Curate

Rev Brian Faulkner 577868  
Oaktree Cottage, Cherry Tree Rd  
Plumstead NR11 7LQ  
briantfaulkner@btinternet.com

**Lay Reader** Gill Peat 734226  
**AWA** Judy Rosser

### Church Wardens

Baconsthorpe	Tessa McCosh	577611
Barningham Winter	Amelia Courtauld	577250
Edgefield	Emma Cletheroe	587049
	Angela Turner	587292
Hempstead	Ann Udale	713656
	Su Summers	710702
Itteringham	Ray Covell	587659
	Derek Turnbell	587259
Little Barningham	Pamela Daniels	577436
	Michael Daniels	577436
Matlaske	Thomas Courtauld	577250
Plumstead	Eleanor Faulkner	577868
Saxthorpe	Merlin Waterson	587610
	Heather Monks	587118
Wickmere	Tony Hurn	577309



### Parish Council Chairs

Baconsthorpe	Jonathan Cooper	577527
Edgefield	John Seymour	587504
Hempstead	Paul Sanders	713217
Itteringham	Jimmy Fowell	587356
Lt Barningham	Harry Betts	577640
Matlaske & Barningham	Sara Buxton	577207
Plumstead	Alastair Brown	577447
Saxthorpe & Corpusty	Imogen Waterson	587610
Wickmere	Leslie Ash	577566

## What's On

### APRIL

Fri 1	10.30am	<b>Hempstead Coffee &amp; Gossip</b>	Village Hall
Wed 6	7.30pm	<b>Hempstead Play Reading</b>	Village Hall
Thur 7	10.30am	<b>Matlaske St Peter's PCC AGM</b>	Barningham Hall
Fri 8	7.00pm	<b>Baconsthorpe Pat Nearney &amp; Danny Platton</b>	Village Hall
Fri 8	7.30pm	<b>Edgefield Vestry Meeting &amp; APCM</b>	Village Hall
Tues 12	7.30pm	<b>Plumstead The Norfolk Cranes Story</b>	Plumstead Church
Wed 13	7.00pm	<b>Hempstead Village Hall AGM</b>	Village Hall
Fri 15	7.00pm	<b>Edgefield Film Night: The Imitation Game</b>	Village Hall
Sun 17	7.00pm	<b>Hempstead Cyan Traces Jazz Night</b>	Village Hall
Wed 20	2.00pm	<b>Corpusty LinC</b>	Village Hall
Wed 20	7.30pm	<b>Hempstead Film Club</b>	Village Hall
Thur 21	3.30pm	<b>Corpusty Families Together</b>	Village Hall
Fri 22	7.00pm	<b>Edgefield Church Quiz Night</b>	Village Hall
Fri 22	7.00pm	<b>Wickmere Social Evening</b>	Village Hall
Sat 23	10.00am	<b>Corpusty LinC Table Top Sale &amp; Coffee Morning</b>	Village Hall
Sun 24	12.30pm	<b>Little Barningham St George's Day Luncheon</b>	Village Hall
Tues 26	10.00am	<b>Baconsthorpe Plant Sale</b>	The Old Rectory
Wed 27	2.30pm	<b>Baconsthorpe Parochial Church Council AGM</b>	Ash Tree Farm
Fri 29	6.00pm	<b>Baconsthorpe Pop-Up Pub</b>	Village Hall
Sat 30	10.00am	<b>Wickmere Plant Sale</b>	Village Hall

### MAY

Mon 2	11.00am	<b>Itteringham May Fayre</b>	Playing Field
Thur 12	7.30pm	<b>Baconsthorpe Village Hall Committee Meeting</b>	Village Hall
Fri 13	7.00pm	<b>Baconsthorpe Jumble Sale</b>	Village Hall
Fri 13	7.00pm	<b>Edgefield Film Night: TBA</b>	Village Hall
Fri 13	7.00pm	<b>Matlaske Quiz Night</b>	The Stables, Barningham Hall
Mon 16	7.00pm	<b>Plumstead Annual Parish Meeting</b>	Plumstead Church
Fri 27	6.00pm	<b>Baconsthorpe Pop-Up Pub</b>	Village Hall

## BACONSTHORPE PLANT SALE, PLANT SWOP & COFFEE MORNING

Tuesday 26 April 10am - 12.30pm

The Old Rectory, Church Lane  
Baconsthorpe, NR25 6LU

Entrance £2.50 including coffee and biscuits - all proceeds to St Mary's Church

## Regular Events

### Baconsthorpe Village Hall

7.30pm	<b>Line Dancing</b> - 711320	Mondays
10.00am	<b>Diocesan Play Van</b> - 07918 027092	Tuesdays during term time
7.30pm	<b>Carpet Bowls</b> - 711320	Tuesdays

### Corpusty Village Hall

2.00pm - 4.00pm	<b>Bure Valley Quilters &amp; Stitches</b>	Second and fourth Mondays
10.00am - 12noon	<b>Norfolk Knitters</b> £7 for a 4 week term or £2 per week	Second Tuesday
	Rita Taylor 587507 K2togp1@btinternet.com	
10.00am - 12noon	<b>Art Group</b>	Thursdays
9.30am - 11.30am	<b>Toddler Group</b>	Fridays during term time

### Edgefield Village Hall

7.00pm	<b>Parish Council Meeting</b>	Third Monday
2.00pm	<b>Tuesday Club</b>	First Tuesday
2.00pm	<b>Ladies Club</b>	Second Wednesday
10.30am	<b>Coffee Morning</b> - Jeff Witts 587661	Last Thursday

### Hempstead Village Hall

10.00am	<b>Charcoal Drawing</b> £4 includes coffee, biscuits and paper	Tuesdays
	Mike Thody 711282	
7.30pm	<b>Film Club</b> - Mike 711282 / Yvette 712460	Third Wednesday

## Mobile Library Van

### 14 April / 12 May / 9 June / 7 July / 4 Aug

Itteringham	11.00	NR11 7AP	The Common
	11.15	NR11 7AY	The Rectory
Lt Barningham	12.05	NR11 7AG	The Street
Matlaske	12.30	NR11 7AQ	Old Post Office
Plumstead	1.15	NR11 7LG	Walnut Farm
Baconsthorpe	2.45	NR25 6LJ	Council Bungalows
	4.10	NR25 6LG	Old Post Office
Hempstead	3.20	NR25 6LE	Hare & Hounds
	3.40	NR25 6TL	Telephone kiosk

### 28 April / 26 May / 23 June / 21 July / 18 Aug

Saxthorpe	11.50	NR11 7BL	Old Post Office
Corpusty	12.10	NR11 6QP	School
	12.40	NR11 7BU	Great Farm Cott's
	2.00	NR11 6QJ	Adams Lane
	2.15	NR11 6QL	3 Council Houses
	2.30	NR11 6QL	16 Council Houses
Edgefield	3.15	NR24 2AX	The Street
	3.40	NR24 2AL	The Memorial

### 13 April / 11 May / 8 June / 6 July / 3 Aug

Wolterton	12.45	NR11 7LY	Wolterton Hall
Wickmere	1.15	NR11 7ND	Village Sign

## Post Offices

### Baconsthorpe Village Hall

Tuesdays	12.30pm – 4.00pm
Fridays	9.30am – 12.30pm
All services	

### Corpusty Stores

	587202
Monday-Saturday	9.00am – 12.00noon
All services including Euros	

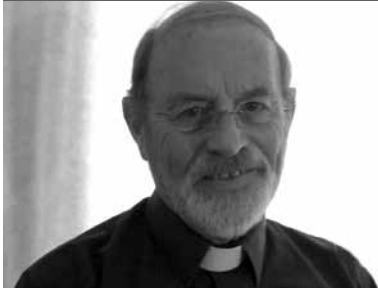
### Itteringham Village Shop

	587325
Monday-Saturday	9.00am – 5.00pm
Sunday	9.00am – 12.00noon
All services including Euros	

### Holt Library

	712202
9 Church Street, Holt NR25 6BB	
Mon Wed Sat 9.30am-1.00pm	
Fri 9.30am-6.00pm	

## Reflection: A Little Bit of Paradise



Sandy beaches, full churches in almost constant sunshine with temperatures ranging from 24 – 29c in February. A little bit of paradise – what is there not to like about that? Early last month, my wife Judith and I set off on another of many return visits to the Caribbean island of Antigua. The trip was a combination of work in the Church of the North East Caribbean & Aruba Diocese, holidaying with our grandchildren and enjoying a mid-winter break in a warm climate.

A former British colony in the eastern Caribbean, Antigua (9 by 12 miles) has some of the most wonderful beaches in the world and its 90 mile coastline boasts of 365 beaches – a beach for every day of the year. From very modest beginnings, the tourist industry is now the most important sector of the economy – with over 125,000 visitors each year contributing over 60% of all income and half of all jobs.



The contrast between the affluent tourists and the more modest life-styles of the locals is noticeable almost everywhere. Extended family occupation of small wooden dwellings with water fetched from stand pipes and walking or the use of donkeys or buses for transport add up to a tough life for many within the poorer sections of the community.

Among the local population church-life is very active wherever you go. Children are taken to church (usually by their Grandmothers) from an early age. Membership of the choir is popular and necessary as some times church services include as many as twelve hymns. The services begin early in the morning (6.30am or 8am) – before the heat of the day. They last well over two hours but nobody minds. Sunday church is a regular chance to dress up, share your faith and meet your friends & neighbours. They are just thankful to God for the gift of life each day. “No hurricanes, volcanoes or earthquakes have hit this year!”

The strength of their faith was summed up by a local preacher. He spoke of God’s call to each of us – calling us to the safety of his arms, stretched out for us on the cross, strong enough and broad enough to meet all our needs and keep us safe. So many memories as the three weeks flashed by – but chiefly of a church that is very much alive and well!

Rev Michael Banks

## Church Services for April

Midweek Service Wednesdays 9.00am Plumstead

**3<sup>rd</sup> Easter 2** Exodus 14:10-end / Acts 5:27-32 / John 20:19-31

9.00	Holy Communion <i>CW</i>	Little Barningham
9.15	Holy Communion <i>BCP</i>	Baconsthorpe
10.45	Matins	Hempstead
11.00	Family Service	Wickmere

**10<sup>th</sup> Easter 3** Zeph 3:14-end / Acts 9:1-6(7-20) / John 21:19-31

9.00	Holy Communion <i>BCP</i>	Itteringham
10.30	Community Sunday	Little Barningham
10.45	Matins	Barningham Winter
11.00	Morning Praise	Saxthorpe
11.00	Holy Communion <i>CWTL</i>	Edgefield

**17<sup>th</sup> Easter 4** Gen 7:1-5,11-18 / Acts 9:36-end / John 10:22-30

8.00	Holy Communion <i>BCP</i>	Wickmere
9.15	Holy Communion <i>BCP</i>	Plumstead
10.45	Matins	Baconsthorpe
11.00	Morning Prayer	Little Barningham

**24<sup>th</sup> Easter 5** Gen 22:1-18 / Acts 11:1-18 / John 13:31-35

9.00	Family Service	Edgefield
9.15	Holy Communion <i>CWTL</i>	Hempstead
10.45	Matins	Plumstead
11.00	Morning Prayer <i>BCP</i>	Itteringham
11.00	Holy Communion <i>CW</i>	Saxthorpe

**1<sup>st</sup> May - Easter 6** Ezek 37:1-14 / Acts 16:9-15 / John 51-9

9.00	Holy Communion <i>CW</i>	Little Barningham
9.15	Holy Communion <i>BCP</i>	Matlaske
11.00	Family Service	Wickmere

*CW* = Common Worship    *BCP* = Book of Common Prayer    *TL* = Traditional Language

# Corpusty Stores & Post Office

Everything you need,  
every time you need it.

Store open 8am-8pm Mon-Sat, 9am-6pm Sun.

Post Office open 9am-12pm Mon-Sat

01263 587202

Norwich Road, Corpusty



**Walks Open Daily**

**Greedy Goose Tearooms**

**Gardens & Events**

Please see website for more information

**www.manningtongardens.co.uk**

# R D Goodge

General building

Flint work

Roofing

Tel: 01263 734014

Mob: 0779 515 8447

www.rdgoodgebuilder.co.uk.

# STUART'S TAXI TRAVEL

Sheringham: 01263 824444

Holt: 01263 710088

Freefone: 0800 734 44 44

stuartstaxitravel@btinternet.com

www.stuarts-taxi-and-travel.co.uk

**FRIENDLY & RELIABLE  
SHORT or LONG DISTANCE**

# Quality Hand Painted Furniture

Pre-loved, Vintage and Antique Pieces  
Brought Back to Life with Passion and Paint

For sale or by commission  
Visit our shop at

Nowhere Lane, Nr Sparham, NR9 5PD

www.countrymodern.co.uk

01603 554224 or 07789 502946

**Country Modern**  
Furniture | Accessories | Interiors

# YOGA

Alice Martineau

WIVETON

5.30 & 7pm

Tuesdays

ITTERINGHAM

9.30am, 5.30pm & 7pm

Wednesdays

Soften, strengthen and align the body and mind.  
Everyone is welcome.

mail@alicemartineau.co.uk

www.alicemartineau.co.uk

07973 278 895



# Baconsthorpe

Fri 8 7.00pm **Pat Nearney & Danny Platton** - Village Hall  
Tues 26 10.00am **Plant Sale** - Old Rectory  
Wed 27 2.30pm **Parochial Church Council AGM** - Ash Tree Farm  
Fri 29 6.00pm **Pop-Up Pub** - Village Hall



Corinne Youngs

577263

# 200 Club

£25 John Cooper, £10 Ann Gibbs, £5 Barry Dennis, Pat Abbs

# Village Hall News

The Bingo was a great success with £300 being made towards the up-keep, repairs and new kitchen flooring. Thanks to everyone who supported us and gave prizes. We are having a Jumble Sale on Friday evening 13<sup>th</sup> May at 7pm. Any good clothes, jumble or bric-a-brac would be appreciated. These may be left at the hall or ring John on 711320 if they need collecting. We hope we will see lots of you at Pat Nearney & Danny Platton on Friday the 8<sup>th</sup> April at 7.30pm for a lovely evening of songs and squit: £7 per person to include refreshments. There will be a raffle. Tickets are on sale now and going fast – don't be disappointed - book now. OUR NEXT MEETING IS ON THURSDAY 12TH MAY AT 7.30PM – ALL WELCOME

# Golden Congratulations



To Rosemary and John Hardingham who celebrate their golden wedding anniversary on 2<sup>nd</sup> April. John and Rosemary were married in 1966 at Baconsthorpe Church and Rev Francis Allen officiated. Four cousins were bridesmaids, and John's brother, Christopher, was best man. Rosemary remembers it was a wet morning but the sun came out in the afternoon to shine on the occasion. The reception was held in Hempstead village hall from where John and Rosemary settled into their cottage in Chapel Yard. They spent their honeymoon in London later that year.

# New Arrival

Welcome to Poppy Ann Rix, and many congratulations to proud parents Heather and Karl. Poppy was born on 27<sup>th</sup> February 2016 and is a beautiful first grandchild for Tracy and Adrian Rudd.

# Pop-Up Pub

At the February Pop-up Pub the mobile fish and chip van called and provided the supper, which was enjoyed by many of us. This month the pub will pop-up on 29<sup>th</sup> April. Come along and meet your neighbours, and supper will be available.

# Parochial Church Council AGM

This will be held on Wednesday 27<sup>th</sup> April at 2.30pm at Ash Tree Farm. Everyone is welcome to attend this meeting.



**SILVER SURFERS**  
Computer Services

# PC Problems? No problem!

*A reliable, friendly, efficient service  
in the comfort of your own home*

- Installation • Troubleshooting • Tuition •
- Free Advice • Upgrades •

Andrew Benn 01263 761133  
www.silversurferandy.com

# M. A. SULLIVAN

# FENCING SERVICES

*Free Quotations*

01263 585016 or 07972 707053

Breke House, 3 Norwich Road, Corpusty

## Barningham Winter

At the Annual PCC meeting held on 15<sup>th</sup> March Mrs Amelia Courtauld was elected as Churchwarden, Mrs Sara Buxton as Lay Chairman, Mrs Chuffy de Bunsen as Secretary and Mr John Perks as Treasurer until the end of the year. Mr Perks has given the church 35 years of his time and wonderful knowledge both as Treasurer and Fabric Officer, and we all offer him the hugest and the most sincerest thanks for all his sterling work. He has kept St Mary's church in the most wonderful condition, and whenever there has been any work to do he has had his ladder there and dealt with the work to the highest standard. He has overseen many a project and is now working on the latest repair work which has been given HLF support.



Sara Buxton  
577207

The PCC hopes to run a Scrabble evening on 9<sup>th</sup> September at Barningham Hall and a wreath-making day in the stables on 1<sup>st</sup> December. More information will be published about this at a later date but PLEASE do keep that evening and day free.

Please do let me know of any Barningham news. As we are a rather 'spread out' community I don't always get to hear of what has been happening in your bit of Barningham. If you don't want to speak to me (!) my email address is s.m.buxton@hotmail.co.uk.

## Edgefield

Fri 8 7.30pm **Vestry Meeting & APCM** - Village Hall  
 Fri 15 7.00pm **Film Night: The Imitation Game** - Village Hall  
 Fri 22 7.00pm **Church Quiz Night** - Village Hall



Richard Peaver  
587486

### Film Nights

Please note that doors open at 7pm for a prompt start at 7.30pm. Entrance is £4.50 or £5.50 including Jim's wonderful home-made ice-cream.

### Church News

A reminder that our Annual Parochial Church Meeting is at the Village Hall on Friday 8<sup>th</sup> April at 7.30pm. The Lent Course this year has been very good. Thank you, Marion.

The Quiz, which raises much needed funds for the church, is on Friday 22<sup>nd</sup> April at 7 pm, at the Village Hall. Your tickets, at £7.50, include a Fish & Chip Supper. Bring your own drinks and glasses, but tea and coffee will be included. If you can arrange a table for four, that is excellent, but odd numbers can be sorted out on the night. Tickets, which must be paid for when booked, from Janet, Richard and Angela.

The vestry roof has been recovered with a special felt. We still need a flower arranger for 2 weeks in May, and suggestions cutting the church car park grass in the summer. Help...

Do make a note of Sunday 24<sup>th</sup> July 3 pm, when we shall be holding a Pets' Service, with tea afterwards! Marion will bring her snake, but don't worry, she will be safely tucked away until after the service. She is a royal python, totally harmless, and very friendly! It should be a fascinating afternoon, and probably rather noisy!

We hope to have a special service to celebrate the Queen's 90<sup>th</sup> birthday during the weekend of 10 - 12 June, within the Benefice, and are aiming not to clash with other activities.

Angela Turner

## Village Hall News

March 12<sup>th</sup> saw our annual Irish Night, and yet again it was a huge success and it was lovely to see a lot of people from other villages at the event. Our name appears to be spreading. Although there are several months to go, make sure you pencil Saturday 2<sup>nd</sup> July, 6.00pm in your diaries. "Edgefest" is coming to The Green. With music from an excellent band, Hard Rain, a licensed bar, and a hog roast from Graves Butchers, we are in for a fantastic night. Be there or be square!

Jim Frost

## Hempstead

Fri 1 10.30am **Coffee & Gossip** - Village Hall  
 Wed 6 7.30pm **Play Reading** - Village Hall - call Su Summers 710702  
 Wed 13 7.30pm **Village Hall AGM** - Village Hall  
 Sun 17 7.00pm **Cyan Traces** - Village Hall - call Ian Summers 710702  
 Wed 20 7.30pm **Film Club** - Village Hall



Sharon Hannah  
711769

### 200 Club

£25 A Mack £10 J Loach £5 C Inglis, D Durst, P Wallace

On 21<sup>st</sup> May 7-7.30pm Hempstead hosts its May Feast £9 adults and £5 for under 13s for this superb event featuring Graves' gammon and lamb roast, home-made salads and desserts. To make sure of your place for this ever-popular event, reserve places for you and your friends with Tim Scarff 711657 or Ian Summers 710702 (ask about vegetarian and other special requirements when booking). Bring your own drinks and there will be a raffle.

Best wishes to Dave Smith who has been recovering from a stroke in hospital for the last few months.

Congratulations to Iris Hicks who has become a great grandmother for the twenty-fifth time!



Sadly we are to report our wonderful Uncle Jumbo who has resided in the village for the last year has passed away. He had been responsible for cutting the grass on the play field and green, and came along with me to the last few church occasions and made himself known to everyone. For someone who had so little, he gave so much. He helped run a youth group in Sheringham, and was a regular at the Salvation Army in Briston. He had only returned in October from the Ukraine where he had spent a few weeks doing charity work, and was much loved in that country too. We will miss him enormously. God bless Uncle Jumbo.



## Four Seasons Garden & Property Maintenance

pruning • fencing  
 hedge trimming • leaf clearing  
 garden clearance • tidying borders  
 lawn management • cleaning gutters  
 small tree removal • painting & decorating  
 building small garden walls • repointing brick and flint  
 Fully insured with 10 years experience

**Ben Radley**

07776 197288 01263 577569 b\_radley@hotmail.co.uk

## North Norfolk Tree Services

For all your tree surgery needs

Over 30 years experience  
Fully insured, based in Holt  
Call for a free no obligation quotation  
and advice

**Jeremy Cox**

01263 713389  
07503 885499  
nntrees@gmail.com



## IYENGAR YOGA CLASSES

*Stretch, Strengthen,  
Balance, Relax*

Beginners and experienced students welcome.  
**Edgefield, Reepham, Norwich and Fakenham**  
Daytime and evening classes  
*Block booking @£8 per class after your first class*

**Contact Liz Ward: 07740 105 339**  
**e-mail: jlward@talktalk.net**

Your local, friendly filtration experts! 01603 871594

Water softeners & scale reduction filters  
Drinking water filter systems & filter taps  
Whole house filter systems  
Salt supplies and replacement filter cartridges



3&5 Old Winery Business Park, Chapel St, Cawston. NR10 4FE  
www.freshwaterfilter.com (adjacent to Broadland Wineries)

## CAST IRON COOKERS



### Service & Repair

Jon Cooper

Dales House, The Street,  
Baconsthorpe NR25 6AB

01263 577527 or 07767 494369

## Garden & Home Helpers

All basic help for you in your house or garden  
by husband and wife team from Matlaske.  
We can do the whole job or simply help you to  
complete a task. Hourly or fixed-rate prices  
from £10 per hour. References available.



07909 183190 07950 822802

## Jones the Sweep



Highlands, Southrepps Road,  
Antingham, North Walsham NR28 ONW

[hjjones92@yahoo.co.uk](mailto:hjjones92@yahoo.co.uk)

01263 833362 07799 484012

## H.V. GRAVES

24 Gladstone Place, Briston 01263 860333

### Family Butcher

Poulterer & Game Dealer

Licensed to sell **Wines & Spirits**

In-town Butchery at **Larners of Holt**

01263 710000

**Fresh Bread & Cakes** from our own bakery  
**Weekly Deliveries** in our refrigerated vans

## C. H. MATTHEWS Plumbing and Heating



Juniper Lodge, Hempstead,  
Holt, Norfolk NR25 6TW  
Tel: Holt 713374

## Itteringham

The Church Commissioners are looking to the future. St Marys' churchyard is to extend northward. The extra will provide grave space for another hundred or two years barring return of the plague, which we understand is unlikely. Planning for change of use from agricultural is to be sought, and fresh boundaries will appear post consent.



Eric Goodman  
587278



Looking Northwards

Correspondence has been undertaken with our popular MP, Norman Lamb, over the cancellation of the proposed telephone mast a little way up Wolterton Road. The deadline for applications had been 31<sup>st</sup> October 2015, but planning was not agreed until 19<sup>th</sup> November. Someone did not 'mind the gap'! In spite of this writers' writings, the writings of others and also the return of writings, it seems unlikely that we shall enjoy coverage for a while longer. The Prime Minister has promised nationwide coverage by 2018, but it may be too soon to consume our pigeons! A friend who recently returned from Laos (a very poor and hilly country) reports that full coverage is available in all parts. In addition to mobile signals, powerful broadband seems elusive in Itteringham.

Sam Barker, late of The Bintree, leapt into the abyss of future a year or several ago and is now described by The National Portrait Gallery as a world class photographer. On 23<sup>rd</sup> January he took not images but instead a bride and she, Kate Rawlinson, lawyer and burlesque

dancer, a groom. Burlesquing in her wedding dress was a wow. Happiness in the long view to you from Itteringham. Elspeth and family are delighted.....of course.

There is money in the till and so it is possible, even likely, that our aged telephone box may soon achieve its long awaited transformation from relic to relevance as a feature of the village street scene once more. Installation of a working phone remains under discussion.

It is not as easy as simply multiplying ingredients to take account of greater numbers, and so Julie and Paul must be congratulated for their chilli con carne and the alternative without either chilli or carne which were both delicious and much enjoyed. The quiz was skilfully constructed and well balanced and lots of fun. A full house raised around £400 for church funds, and credit to Sandra Walker for her organisational excellence. Applause and encores to all on both sides of the house and to those who contributed prizes for the lottery. A very good evening was had!

## R G & M Wadlow & Son Ltd

Your local joinery shop  
established 1985

For all your joinery needs:  
new windows, doors etc, hand-made  
kitchens, wardrobes and bookshelves.  
Full paintshop facilities.

Full fitting service available and small  
building projects undertaken eg  
roofing and extensions, drain clearance  
and relaying new drains etc

Telephone 01603 308928

Mobile 07768 086462

Email bobwadlow2@btconnect.com

www.wadlowjoinery.co.uk

## Bure Valley Community Centre Itteringham



For all your function needs:  
Wedding Receptions, Dances, Dinners,  
Indoor Sports/Recreation etc.  
For bookings etc call 01263 587 564

## FIREWOOD

Hard, Mixed or Soft Wood  
2, 3 or 4 Loose m<sup>3</sup> Loads

Tree Surgery & Felling  
(5 Million Public Liability / NPTC Qualified)

James Barker

01263 577500 / 07799 784085

## Jill Hill

Designer and maker  
of special embroidered garments,  
accessories and art textiles.  
Mending and alterations  
also undertaken.

01263 584155 or 01263 587268  
or call at  
The Old Workshop Gallery  
Corpusty

www.corpustygallery.com



**DAVID THOMPSON  
MASTER  
CHIMNEY SWEEP**

All chimneys, flues & appliances swept  
Brush and vacuum used  
CCTV Chimney surveys  
Bird/rain guards, vent caps  
and cowls supplied and fitted  
NVQ qualified chimney engineer

**01328 851081**  
www.the-sweep.co.uk  
D. Thompson Chimneys Ltd

## CLEAR CRYSTAL WINDOW CLEANING

Water-Fed Pole System  
DOMESTIC AND BUSINESS  
CONSERVATORY ROOFS ALSO  
CLEANED  
Fully Insured, Friendly and Reliable  
Call Gary on 0787 9007440

## Andrew Dixon

PAINTER & DECORATOR

Interior and Exterior  
Low Cost - High Standard

Call Andrew

01263 860204

07770 447714

## Little Barningham

Sun 10 10.30am **Community Sunday** - Village Hall

Sun 24 12.30am **St George's Day Luncheon** - Village Hall



Tucked away in a not very often seen  
part of the village, a new, very desirable  
residence has been constructed. A  
complete wooden structure and  
therefore erected quite quickly. It can  
only be occupied by a hunter – hope the Politically  
Correct Brigade don't hear about it. The hunter of  
course is an owl! The Owl House is on the north side of  
the church, and was built and erected by none other than  
Michael Daniels. I hope the occupying owl appreciates

your handywork, Michael. Other work carried out by Michael – sills on the doors to the vestry and the chancel installed and stained. Work at the church to be carried out later in the year will be the redecorating of the vestry and chancel, one of the few jobs not done by Michael.

Mothering Sunday was agreed by all to be a lovely service, with two mothers reading the lessons. Posies of flowers were given and arranged by Margaret Betts. Everyone in the congregation received one, even the men. Congratulations Margaret, you made the right amount with none left over.

We will not have to wait for a nightingale to visit us to hear lovely singing. We have our own nightingale-Olivia Watson, who has a new CD out. You can see and hear her on you tube (OliviaEmmaWatson) and for more information Olivia's e-mail address is oliviaemmawatson@gmail.com

Community Sunday as usual was very successful, and not just for the village residents, so if you are free come and be part of a very convivial group and the good array of food and conversation. The next one is the 10<sup>th</sup> April.

The St George's Day Luncheon will be held on Sunday 24<sup>th</sup> April in the village hall. Roast beef with all the trimmings, plus vegetarian option followed by desserts all for £7.50. Places are limited so book by the 17<sup>th</sup> - telephone Sue 570091.

## Matlaske

Thur 7 10.30am **St Peter's PCC AGM** - Barningham Hall

**100 Club**

£25 Richard Rowe £10 Ruth March £5 Chelsea Baynes

**A Date for Your Diaries!**

At 7.00pm on Friday 13<sup>th</sup> May (lucky for the winners, at least!) there will be a quiz night at The Old Stables, Barningham Hall, by kind permission of Thomas and Amelia Courtauld.

**Mothering Sunday**

On Mothering Sunday there was a full church. The service was taken by Judy Rosser in Marion's absence. Karen Neill played the organ. Everyone went home with a colourful bunch of daffodils.



Derek Wintle  
570097



Florence Hunt  
577363



# PHIL BORLEY

Garden Construction :: Ponds & Patios  
Turf :: General Garden Maintenance  
Paving :: Fencing & Car Ports & Rotavating

For the Complete  
Garden Service



Tel: 01263 587262

# R.M.C

autos

- Servicing
- General Repairs
- MOT Tests
- Tyre Fitting Service
- Welding
- Recovery
- Car Sales

Norwich Road, Edgefield NR24 2RL

Contact Ross 01263 587970

## Pet Sitting Service

Pet care in your own home while you're away  
Experienced, trustworthy & caring  
CRB checked & insured  
References available  
critter5itter@outlook.com  
01263 735727  
More information on website:  
<http://spotandspike.wix.com/crittersitter>



## Gary Chapman

07887906620

SAND, SHINGLE & AGGREGATES  
FIREWOOD & BARK MULCH  
SUPPLIED & DELIVERED

DRIVEWAYS, PATIOS & DRAINS LAYED  
GROUNDWORKS & LANDSCAPING  
CONCRETING & GARDEN CLEARANCE

CEMENT MIXER, WACKER PLATE,  
VIBRATING ROLLER HIRE,  
MINI DIGGER & JCB HIRE

LIGHT HAULAGE

FREE QUOTATIONS ON REQUEST

# Ivan Fisher

## FUNERAL HOME

We are the only family owned  
funeral directors in Aylsham  
and offer the highest  
standards of personal care  
and attention.

\* Pre-paid Plans Available \*

\* Private Chapel of Rest \*

\* Floral Tributes and Memorials \*

\* Home Visits Made \*

Tel: 01263 735161 (24 hrs)  
2-4, Norwich Road, Aylsham  
[www.ivanfisherfunerals.co.uk](http://www.ivanfisherfunerals.co.uk)

## Plumstead

Tue 12 7.30pm **Norfolk Cranes Story** - Plumstead Church

We have joined the 21<sup>st</sup> Century and you can now contact me by email - see the front of the newsletter! I am always happy to include news of our village life.

### The Norfolk Cranes Story

Tuesday 12 April, 7.30pm at the church, tickets £7 on the door; first come, first served. The natural return of wild cranes to Norfolk is the subject of this illustrated talk. Chris Durdin, ornithologist and son of John Durdin, long time resident of Plumstead, is kindly coming to share his experiences and involvement in observing and monitoring this amazing event. Chris recently appeared on Countryfile talking about the cranes. He will also show a short film of their reintroduction in Somerset.



Mary Lintott  
577718

### Clean for The Queen for Her Majesty's 90<sup>th</sup> Birthday

Driving rain did not deter Plumstead Parishioners who supported the *Clean for The Queen* campaign with a first class tidy up in and around their village collecting no less than fourteen bags of rubbish, six old tyres, bits of piping and various paraphernalia. Alastair Brown, PC Chairman, said "Despite the weather, we have helped to make the area look at its best for The Queen's 90<sup>th</sup> birthday and village event later in the year".



### Bunting Making



Five of us arrived at Doreen Hebron's house to make an organised plan of attack with material, scissors, template, ironing board and everything needed to make some new village bunting. Some of us have taken sewing home, so if you are interested in helping out please email Mary.

### Monday 16 May Plumstead Church

Annual Parish Meeting 7.00pm and Annual Meeting of Plumstead Parish Council 7.15pm

### BBQ Saturday June 11<sup>th</sup> 5pm

Look out for Carolyn and Steve who will be bringing the invitations round the Village during April. Adults £6 Children under 16 free.

Steve and Pam Small have, by Norfolk standards, only been with us for a short time but during their stay they became fully involved in the village. Steve became a stalwart on the PEG Committee, and Pam (using her experience with second-hand books) with Steve were an enormous help in organising the two Book Sales we had for PEG. They were often to be found in their immaculate garden and we shall miss their cheery waves when they were kneeling, hard at work, weeding their front borders. The Parish Council and the village thank them for donating a picnic bench to the Village Pond. We now have no excuse not to take a picnic and just enjoy what our lovely village has to offer. We wish them well in their new home in Aylsham.

Dave and Frankie Tull have moved into Fenmoor, and Eric and Libby have moved into Tudor Cottage. We welcome them all to our village and hope that they will enjoy our small community.



The Common  
Itteringham  
Norwich  
Norfolk NR11 7AR

Tel: 01263 587258  
Email: [info@thewalpolearms.co.uk](mailto:info@thewalpolearms.co.uk)  
Website: [www.thewalpolearms.co.uk](http://www.thewalpolearms.co.uk)

A Traditional Country pub serving  
modern British cuisine, using the  
highest quality locally sourced  
seasonal produce, some from our  
own farm.

Chargrilled meat and fish a speciality

Opening Hours  
Monday to Friday  
12:00pm - 3:00pm & 6:00pm - 11:00pm  
Saturday 12:00pm - 11:00pm  
Sunday 12:00pm - 5:00pm



Now in our 11th year!

Monthly classical concerts  
Thursday lunch hour or Saturday evenings  
Aylsham Parish Church

John Snape 01263 768441  
[www.aylshammusic.org](http://www.aylshammusic.org)

## Saxthorpe with Corpusty

Wed 13 7.00pm **Saxthorpe St Andrew's Church AGM** - St Andrew's Church  
Wed 20 2.00pm **LinC** - Corpusty Village Hall  
Thur 21 3.30pm **Families Together** - Corpusty Village Hall  
Sat 23 10.00am **LinC Table Top Sale & Coffee Morning** - Village Hall  
Sat 23 10.00am **Ringing for England** - St Andrew's Church

Please also see Regular Events page 5

Sincere condolences are offered to Lesley Page on the death of his wife, Betty, who died in February. Betty had been an active member of most of the village societies. She had been PCC Secretary for many years, as well as a teacher and was a much-travelled lady. She will be missed by all who knew her.

Trish Porthouse writes: "Regrettably, Short Mat Bowls' Roll-Ups will have to be suspended for the foreseeable future, due to lack of support. However, if there is anybody out there who would like to play, please contact Trish Porthouse 587667.

### Dog Owners - A Plea

The newly refurbished children's playground in The Street, Corpusty is being used less by children and more by irresponsible dog owners. The dog waste is not only unsightly, but is unhygienic and toxic. The waste should be bagged by the owners and disposed of in bins. Children of playground age do not always wash their hands and may ingest harmful bacteria. **Please bag it and bin it!**

### Mothering Sunday

The Mothering Sunday weekend was more like winter than early spring weather-wise, with snow flurries and heavy rain battering the opening daffodils. We are very fortunate having skilled craftsmen in the two villages and beyond, many of whom advertise in these pages. Two such craftsmen worked (outside) through a snow blizzard, sleet, heavy rain and wind only stopping for a hot drink. Thank you gentlemen, for enduring the weather and a job very well done.

### Table Top Sale

LinC are running a Table Top Sale and Coffee Morning at Corpusty Village Hall, Saturday 23<sup>rd</sup> April 10.00am to 1.00pm. Tables £5 each, to book ring 584142 or 584196. Proceeds to a local charity: 'Recycle things you no longer need'.

Snowdrops seemed to find the winter weather confusing. When children from Corpusty Primary visited in January, some of The Old Rectory snowdrops had been out for weeks, but they lasted long enough for the party of the Friends of St Andrew's, Saxthorpe on 6<sup>th</sup> February and many were still going strong at the end of the month.

### Ringing for England

On Saturday 23<sup>rd</sup> April, St George's Day, the church tower of St Andrew's at Saxthorpe will be open for visitors to hear some ringing and have a go at ringing. The ringers will be performing from 10.00 until 10.30 and then will be on hand to show visitors the bells and to help them have a go at ringing. We are looking for more people to join us ringing bells – come along and have a go – it's good fun. The bells at St Andrew's are one of the smallest rings in England and the second smallest in Norfolk. This is part of the RINGING FOR ENGLAND celebration when many church bells across England will be rung. Please come and give us a look and try the ancient art of campanology.



Judith Banks

587319



Saxthorpe church from Corpusty church yard by Roger Last

## EDGEFIELD NURSERIES

GARY SILLIS

Tel: 01263 587457

Nursery open all year round: wide variety of seasonal pot plants, shrubs & perennials

### *Specialists in Fuchsias*

The Nursery is situated on the B1149  
Norwich to Holt Road  
between Saxthorpe & Edgefield

## HEMPSTEAD VILLAGE HALL

### Available for hire

Facilities include tables & chairs, plates & cutlery for up to 80; stage; overhead projector suitable for films and computer presentations

Contact Su Summers 01263 710702  
su@linaria.co.uk

## ITTERINGHAM VILLAGE SHOP

Established 1637

General Store, Post Office, Café and Off Licence  
Run by the Itteringham Community Association  
Groceries, Deli Counter, Whole Foods, Wines, Beers,  
Delicious Cakes, Hand Made Pies, Pet Foods,  
Local Produce, Ices, Sweets, Books, Maps, Plants

Shop open 9.00-5.00 every day except Sunday 9.00-12.00.

Post Office open Monday & Thursday am

Home Deliveries Telephone 01263 587325

## Baconthorpe Village Hall

Ideal for Parties and Receptions

Fully-equipped kitchen; matching crockery for 100 settings; new tables and chairs

Large Main Hall or Committee Room

Charges: £8 per hour – £25 deposit will be required to cover damages or breakages

To book: Evelyn 577315 or John 711320



Carpets, Vinyls, Beds, Blinds, Rugs,  
Carpet Cleaner for Hire  
35 Red Lion Street, Aylsham  
Norfolk NR11 6ER  
Tel: 01263 732066  
Fax 01263 734139



Furniture, joinery, lettering & relief  
carving, repairs  
Estimates and advice free

Workshop 01263 587111

Gallery 01263 587268

The Street, Corpusty

## WILL'S



### Property Maintenance Inside and Out

General DIY Jobs, Tiling, Pressure  
Washing, Mowing, Hedging, Strimming,  
Guttering, Paths, Patios, Fences, etc.

Work carefully undertaken  
01263 577581

## R Wells Memorials



Your Independent Memorial Mason  
Memorials in marble, stone and  
various coloured granites

Brochures upon request

Workshop: 01603 755524 Office: 01603 485691

[www.rwellsmemorials.co.uk](http://www.rwellsmemorials.co.uk)

Unit 8 Sawmill Close, The Street, Felthorpe,  
Norwich NR10 4BH

## Wickmere with Wolterton

Fri 22 7.00pm **Social Evening** - Village Hall

Sat 30 10.00am **Plant Sale** - Village Hall



Helen Goulty  
570043

Spring is certainly trying to make an appearance now. The flowers are putting on a wonderful display, the days are drawing out, and even the sun has made an effort to brighten things up.

Paddy has received a cheque from Norfolk Churches Trust for £87.88 for the Bike Ride. This will help boost the funds.

Many thanks to Richard for stepping in and cutting the grass around the Village Hall, until Vic is able to take over again.

Judy has been asked to chase up the Memorial Bench and ascertain when it will finally be in place. Watch this space...

On 6<sup>th</sup> March a lovely Mothering Sunday service was held. Many thanks to Michael Banks for the service and to Judith for the lovely posies and simnel cake. Well done to Laurie who was a very willing helper. And thank you to Penny for stepping in and playing the organ.

George will be holding her annual Plant Sale on Saturday 30<sup>th</sup> April 10-12pm at the Village Hall. Come along and enjoy a cuppa and a bun, and invest in some lovely plants. If anyone has any plants they want to donate to the sale, George is happy to look after them. Please drop them (not literally!) in at number 8. Fingers crossed for a sunny day.

The re-start of monthly Social Evenings begin on Friday 22<sup>nd</sup> April. The subsequent Social Evenings will be on the last Friday of the month. Look out for posters.

The Queen's 90<sup>th</sup> Birthday celebrations, nationally, will be over the weekend of 11<sup>th</sup> and 12<sup>th</sup> June. George has come up with an idea for a Village Picnic at the Village Hall to commemorate this, but as yet, it is still a work in progress and details need to be thrashed out. If anyone has any other ideas on how to mark this occasion, please get in touch with Richard Hembling.

Birthdays for April are: George, who will be 18 on 15<sup>th</sup> and Emma Riches who will be 15 on 24<sup>th</sup>. Many happy returns!

Speaking on behalf of the Village Hall Committee, past and present, we would like to say a HUGE Thank You to Gill and Dom for all their help over the years. Not only as chairman and secretary, but for their tireless contribution to all village activities. They are a lovely couple who are sadly leaving the village for pastures new. We wish them all the very best, and don't forget there will always be a small part of Norfolk you can call home. Good Luck, we'll miss you.

Well done to Mark Sayers who has been elected onto the Parish Council, good luck to him. He also informs me that Jake has moved to New Zealand for a years work, good luck to him too.

### DOMESTIC CLEANER WANTED IN BARNINGHAM

£10 per hour - at least 3-4 hours per week

01263 577404



### Do you need a Helping Hand?

We offer a **Live-in Care** service which enables you or a loved one to remain at home with compassion and dignity. So if you are looking for an **alternative to residential care** or as a **short term answer** whilst recovering from illness or operation - then we're here to help.

Call our local care team on **0808 180 1016** or visit [www.helpinghands.co.uk](http://www.helpinghands.co.uk)

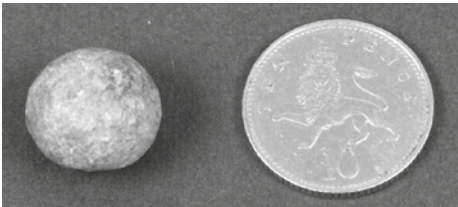
**SURE Computer Systems Limited**

- ☑ Custom Built Quality PC Systems
- ☑ Laptops ☑ Tablets ☑ Upgrades
- ☑ Repairs ☑ Antivirus
- ☑ Troubleshooting
- ☑ Onsite Home And Business Technical Support

The Kongskilde Building, Hempstead Road, Holt, Norfolk, NR25 6EE  
Email: [info@surecomputers.co.uk](mailto:info@surecomputers.co.uk)

Fakenham	Holt
01328 888060	01263 711052
07881 650615	07979 238114

## History Watch



### Musket Ball

Found in Hempstead and dated roughly between the English Civil War (1642-1651) and 1750. From a muzzle loaded, smoothbore firearm, fired from the shoulder and designed for the infantry. Musket calibres ranged from 13-19mm, and they were only accurate to about 100-150 yards. The

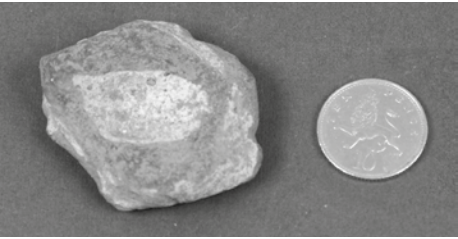
name is possibly derived from the French word 'mousquette', a sparrow hawk; firearms were often named after animals.



### Clay Pipe

This was found in Holt by Sharon's mother, Sue Doy. Clay pipes are difficult to date, but the date of this one is probably circa 1650-1820.

Clay pipes were glazed and they burnt very hot in comparison to other types of pipes, which meant they were difficult to use and easily broken, which is why we seem to find bits of clay pipe everywhere. It is claimed that unlike other materials, a well made pipe gives a "pure" smoke with no flavour addition from the pipe bowl. This example has a cockerel either side, decorating the pipe beautifully.



### Medieval Pot

The pottery has been recorded by the team at Norwich Castle Museum and has been dated 13<sup>th</sup>-15<sup>th</sup> century, it is described as a thumb pressed handle attachment of medieval pottery, externally lead glazed Grimston ware in abraded condition, found also in Hempstead.

Sharon Hannah

Wordsearch solution from page 24

```

+ + + + + T C + + + + +
+ + + + + S L + + + + +
+ + + + + A O + + + + +
+ + + + + C D + + U + + + + +
+ + + R + + R + D + + + + L
+ + E + + + + I Y + + + + I
+ V + + + + + Z + + + + F A
O + + + + + + Z + + O E H
+ + S S H O W E R S L G + N +
+ + + E + + + + + G E T I +
+ + + L + + + + Y + S + H +
T S O R F A + + + + I + + S +
+ + + + + + G + + M + + N +
+ + + + + + + + + + + U +
+ + + + + + + + + + + S +

```

**'Sharp Lines'  
'Quality Finish'**

**Kevin Nichols**  
Painter & Decorator  
Interior & Exterior  
01263 861547 07795 077090

**THWAITE** *30 Years Experience*  
**SIGNS & GRAPHICS**

From TRADITIONAL SIGNAGE to MODERN COMPUTER CUT IMAGES  
Vehicles, Shops, Boats, Houses, A Boards, Logo's  
Magnetics, Windows, Restoration & Repairs

**LARGE Format Digital Printing for -  
Banners, Posters, Canvas, Photos, Panoramas**

Contact Paul 01263 768082  
ROSE COTTAGE, THWAITE COMMON, ERPINGHAM

**Lloyd Durham**  
Independent Family  
**Funeral Directors**

**01263 713113 (24 hours)**  
11a Avenue Rd,  
High Kelling,  
Holt NR25 6RD.  
Email: [lloydurham1933@aol.com](mailto:lloydurham1933@aol.com)  
[www.northernorfolkfuneralservices.co.uk](http://www.northernorfolkfuneralservices.co.uk)  
**Funeral Director:  
Helen Wickes BSc, dipFD NAFD**

**safe** **North Norfolk** **OPTEC**  
**Plumbing & Heating**

01263 577800 / 07880 722707

Registered Installer • Service • Repairs • Bathrooms  
Natural Gas • LPG • Oil • Heat Pumps

[www.northernorfolkplumbingandheating.co.uk](http://www.northernorfolkplumbingandheating.co.uk)  
Church Barn, Sustead, Norfolk, NR11 8RU

**HS** **Legal Advice?**  
HAYES + STORR  
Solicitors  
& Notaries

**Make us your first call  
01263 712835**

law.holt@hayes-storr.com  
[www.hayesandstorr.co.uk](http://www.hayesandstorr.co.uk)

FAKENHAM • HOLT • HUNSTANTON •  
SHERINGHAM • KING'S LYNN • WELLS

**Bed and Breakfast**

Blacksmith's Cottage, Baconsthorpe  
Emma Youngs  
01263 570252 or 07884 432412  
[www.baconsthorpemeadows.co.uk](http://www.baconsthorpemeadows.co.uk)

## Weather Wordsearch

**See how many weather words you can find in the grid.**

Words can go forwards, backwards, up, down, across or diagonally.

	CLOUDY	DRIZZLE	FOGGY	FROST	GALES	HAIL	MIST	OVERCAST	SHOWERS	SUNSHINE				
G	F	W	Q	M	C	S	T	C	R	R	S	L	Y	V
S	L	H	D	Y	L	S	M	L	E	K	T	T	Y	M
N	R	P	J	M	A	G	C	O	U	S	B	F	A	Y
E	U	V	V	C	D	P	K	U	I	P	T	Y	I	A
J	R	N	R	M	K	R	Q	D	M	I	V	Y	J	L
P	L	E	S	J	Z	O	I	Y	A	V	S	H	E	I
J	V	E	P	F	L	N	G	Z	T	X	K	C	F	A
O	V	Z	I	V	I	Q	Y	P	Z	N	V	O	E	H
P	H	S	S	H	O	W	E	R	S	L	G	P	N	G
K	S	Z	E	L	H	G	J	T	H	G	E	T	I	P
I	Z	L	Z	L	C	A	J	J	Y	P	S	T	H	R
T	S	O	R	F	A	C	Q	I	F	I	S	K	S	R
T	Y	I	Y	V	G	G	D	U	M	Y	E	W	N	J
Y	F	S	V	Q	C	P	C	R	V	C	R	T	U	L
A	Z	Y	U	P	T	I	O	L	U	Z	U	M	S	T

See page 23 for solution

## Grow Your Own Hedgehog (well, sort of...)



Things you will need:

- Some old nylon tights (ask, don't just take them!)
- Some earth mixed with sand
- Cress or grass seeds
- A saucer
- Two buttons

Cut a hedgehog-sized tube of nylon, fill it with the earth and sand. Tie at both ends. Press the buttons in place as eyes. Cover with cress seeds. Keep it moist. After a few days, your hedgehog should appear!

Take a photo of it and email it to the editor.  
If it looks anything like a hedgehog, we'll publish it!

## Newsletters Past: April 1887

### HINTS TO COTTAGE GARDENERS FOR APRIL.

Those who have acted on the previous magazine hints will now begin to see the result of taking time by the forelock, as some of their crops will now be beginning to show above ground. Stick the peas "as soon as possible" for protection, and earth up the beans. Let it be borne in mind by those persons who look forward to exhibiting at the Summer Show, that it is the "early" bird who takes the prize in most cases. It is not necessary to sow the whole of a crop at one time, as is generally done, let part be put in in good time, and let the rest follow in a week or two. Another thing I would call especial attention to is this, give your ground a change of crops as often as possible. The farmer knows that if he were to plant the same crop in the same field year after year, his crop would be small, he therefore changes it every year. Why should not the gardener follow the same plan? Lay this hint to heart therefore. If possible do not plant the same vegetable in the same spot two years running. This must specially be attended to in the case of vegetables that are attacked by any disease. Anyone reading these notes will often find lime recommended for different purposes. I am a firm believer in lime for gardening. When the garden is dug over it is a capital plan to dig in a good sprinkling of lime. It purifies the soil, and it destroys the insects. Messrs. Slug, Grub, Worm, and Co, hate lime, even more than the gardener hates the above-named company. As the early potatoes come up this month, earth up well to protect their stems from spring frosts. If you see a frost is coming on, cover the tops quite up, if not with soil, then with dry fern, or litter, or leaves. Should the frost take you unawares, and the tops be frozen, all depends upon how much of the stem is left uninjured. Be careful therefore not to neglect this earthing up as the plants grow. Late potatoes should go in as soon as they begin to sprout, and too much care cannot be taken with the first sprouts, as the chief strength of the tuber is in them. Handle them more carefully than eggs. Lettuces look well, and are handy for cutting, if planted down the sides of walks; and they cannot be pulled too young, not only for the benefit of the plants left in the beds, but they relish capitally with mustard and cress. These salads may be sown, tended, gathered, and I might add "eaten" too, at intervals during the summer by the juvenile members of the family.

Towards the end of the month a sowing of broccoli and late cauliflower should be made. I would urge the necessity of pricking all green crops out as soon as they can be handled, as by the little extra labour is gained the advantage of having good stiff plants to transplant by and bye between the potatoe rows. Sow a few kidney beans at the beginning of this month, but wait until the end to sow the main crop. Keep the pot boiling with peas and beans. The wrinkled peas may be used with safety this month. Flower seeds may be sown in the early part of this month; they will start sooner if sown (as soon as the ground is workable) after a shower, and covered with fine light soil, with a branch or two over them to keep off the birds. Mind the liquid manure tub is in good order, and make good use of it (but not too strong) as the window plants fill their pots with roots. Gardens that are allowed to grow a good crop of weeds can hardly be expected to grow good vegetables, fruit, or flowers, so cut them down, or better still, pull them up while they are young.

A. H. UPCHER.



## Mike Strong's Recipe of the Month

From *Recipes from the Baconsthorpe Newsletter* published in the year 2000

Illustrated by Yvonne Law

Mike Strong is currently in New Zealand

### EASTER CHOCOLATE DIP

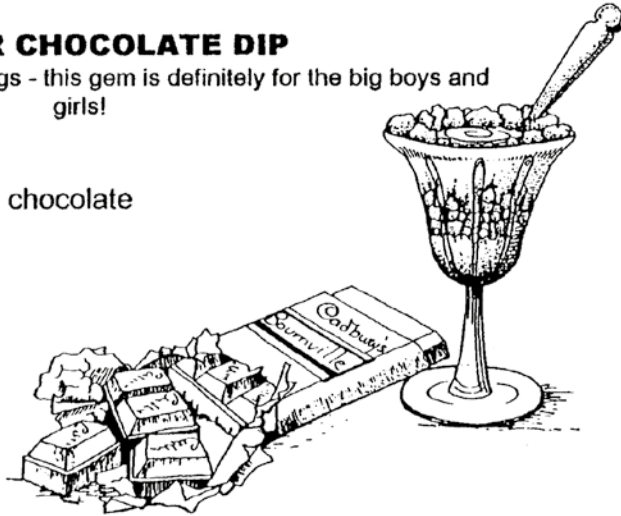
Let the children enjoy their eggs - this gem is definitely for the big boys and girls!

#### Ingredients

- 7 oz Bourneville dark plain chocolate
- 4 oz ratafia biscuits
- 2 tblsp rum - dark
- 4 oz butter
- 4 oz caster sugar
- ½ pint milk
- 2 eggs
- 2 tblsp whipped cream

#### Method

1. Melt chocolate in bowl over a pan of hot water
2. Soak the ratafias in the rum
3. Cream the butter and sugar together then add to the melted chocolate
4. Put the milk and eggs into a saucepan and stir over a gentle heat to thicken (to form a custard) it should be enough to coat the back of a wooden spoon. Be careful not to boil it.
5. Slowly pour the custard into the chocolate mixture, stirring continuously
6. Leave in a cold place or refrigerator until it begins to thicken and set.
7. Spoon ½ the mixture into a glass dish and cover with a layer of ratafias, leaving out some for the top.
8. Continue to cover the biscuits with the remaining mixture
9. Swirl the cream through the centre and arrange the remaining ratafias round the edge
10. Refrigerate for several hours until required
11. Serve with fruit salad or poached fruit.



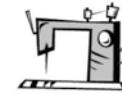
## It Pays to Advertise

With a free distribution to over 1,100 households throughout the year, advertising in this newsletter is extremely good value. For a price list and full details please contact:

Clive Rammell  
cliverammell@outlook.com  
01263 711366

## Norfolk Sewing Machine Services

All makes repaired by highly skilled mechanics  
Over 30 years experience  
Fully guaranteed  
Free estimates  
Discount to senior citizens



01263 584113

When you just don't seem to have enough time

There is always

## An Extra Hand

[www.kirstieplayfair.wix.com/anextrahand](http://www.kirstieplayfair.wix.com/anextrahand)

From dog walking to school runs, house sitting to cooking and everything in between.

Kirstie Playfair 07776 188026

DBS Approved

Fully Insured

## relaxation through movement and visualisation

St Andrew's Church Meeting Room  
NR25 6BB (within the church grounds)

Thursday evenings from  
April 14<sup>th</sup> until May 19<sup>th</sup> at 7.30pm  
£7.50 per session

Aneesh de Vos & Sebastian Deans  
07789 071761  
[shiatsu.sebastian@gmail.com](mailto:shiatsu.sebastian@gmail.com)



## Upholstery, Curtains and Blinds

- Hand made sofas and chairs
- Traditional & contemporary Re-Upholstery
- Made to measure curtains and blinds
- Vertical, Roller & blackout blinds
- Loose covers
- Curtain tracks & poles supplied and fitted
- Repairs and alterations



At Williams all of our work is carried out at our West Runton premises as it has been for the last 30 years, no middlemen means greater value for money.

Whether it's a spring repair, new seat foams or a complete lounge suite with co-ordinating curtains you can be guaranteed of first class customer service and attention to detail.

In our showroom we have pattern books from Parkertex, Linwood etc and we are proud to be Sandersons fabric and wallpaper specialists.

We now stock a range of home accessories including a large selection of Dora Designs doorstops and draught excluders.

Williams  
OF WEST RUNTON

5 Station Road,  
West Runton, Norfolk.  
Tel: 01263 837611  
[www.williamsowestrunton.co.uk](http://www.williamsowestrunton.co.uk)



WHICH? BELIEVE  
WE'RE THE  
**BEST**  
INSURANCE  
SERVICES  
PROVIDER  
IN THE UK

What a great company to do business with

Please talk to your local agent for more details.

Call 01263 712306  
for a quote or pop in  
NFU Mutual Office,  
The Secret Garden  
15-17 Appleyard  
Holt, Norfolk  
NR25 6AR

 **NFU Mutual**  
INSURANCE | PENSIONS | INVESTMENTS

It's about time<sup>®</sup>

Agent of The National Farmers Union Mutual Insurance Society Limited. For security and training purposes, telephone calls may be recorded and monitored.

## Meet the Neighbours - Merlin Waterson



Photograph © John Worrall

Immediately after leaving King's College, Cambridge, in 1970 where he read History of Art, Merlin Waterson joined the National Trust and stayed there for the next 33 years. He spent 11 years in Shropshire and Wales before moving to Norfolk in 1981 as regional director for East Anglia, overseeing the Trust's work in Cambridgeshire, Essex, Norfolk and Suffolk. Merlin must have had one of the most enviable offices in England in a wing of Blickling Hall. For the last three years of his career until he retired in 2004 he was the Trust's Director of Historic Properties.

Since moving to East Anglia Merlin and his wife Imogen have lived in the equally enviable Old Rectory at Saxthorpe and are pillars of their community, Merlin as a church warden at St Andrew's and Imogen as chair of the parish council and as a governor of Corpusty School.

It was on Merlin's watch and with his direct involvement that the Trust acquired Sheringham Park and the wonderful Orford Ness off the coast of Suffolk, which is as near as you can get, he says, to a natural landscape. It was once home to the Atomic Weapons Research Establishment. He still enjoys both properties - he is a talented painter and has painted at Orford and he and Imogen enjoy walking through Sheringham Park to the cliffs at Weybourne.

Ever the vulgar journalist, I asked him for his National Trust 'top of the pops', his favourite Trust properties. Two were Sheringham and Orford. The others were Erddig near Wrexham (he again played a central role in its acquisition) and Plas Newydd, both in Wales. In his handsomely produced book *A Noble Thing, The National Trust & Its Benefactors* (Scala), Merlin recalls sunrise over Snowdonia and the Menai Strait, seen from the upper floor of Plas Newydd on Anglesey, and toast and peanut butter teas at Erddig.

Merlin has had a busy retirement. Until last year he was chairman of the Architectural Heritage Fund and a commissioner of the Royal Hospital, Chelsea. He is still a trustee of the East Anglia Art Fund and Wentworth Woodhouse Preservation Trust. As well as painting, he enjoys engraving and exhibits with the Society of Wood Engravers.

Brian MacArthur